

# HUES OF LIFE

ENGLISH, MONTHLY

Vol. No. 05

Issue No. 06

JANUARY 2026

Price Rs. 100/-

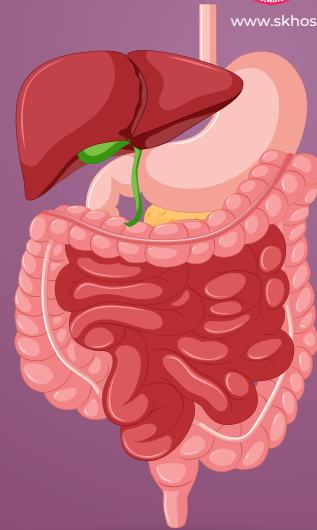
**Healing with Vision  
Dr. Sandhya K.S. Transforming  
Patient-Centric Healthcare**



# HOW TO CHOOSE THE BEST IN GASTRO

Check out our Advanced Surgical & Medical Gastroenterology

- A complete care for your Liver
- Laparoscopic Liver Transplant
- Led by dedicated Liver Transplant specialists
- Specialized Gastro Care - Comprehensive Diagnosis & Treatment



## LIVER TRANSPLANT & SURGICAL GASTROENTEROLOGY



**Dr P Balachandran Menon**  
MBBS, MCH (General Surgery)  
PDCC (Vascular Surgery)  
Senior Consultant  
Liver Transplant Specialist  
AIG Hyderabad



**Dr Baiju Senadhipan**  
MBBS, MS, DNB  
MCH (Surgical gastro) MNAMS  
FMAS Senior Consultant  
Hepatobiliary Surgery



**Dr Subhash R**  
MBBS, MS (Gen Surgery)  
DNB, MCH (SGE), M PHIL  
Senior Consultant  
Hepatobiliary Surgery

## MEDICAL GASTROENTEROLOGY



**Dr G Jaladharan**  
MBBS, MD (General Medicine)  
DM (Gastroenterology)  
Senior Consultant  
Head of Department



**Dr Vijay Narayanan H**  
MBBS, MD, DNB  
DM (Gastroenterology)  
Consultant Gastroenterologist



**Dr Hareesh Kareem**  
Senior Consultant  
Gastroenterologist  
MBBS, MD, DM



**Dr Neehar M Shanavas**  
MBBS, MD, DM (Gastro)  
Consultant Gastroenterologist



**SK EXCLUSIVE LIVER CLINIC**

Monday to Friday  
Time: 10:00am - 1:00pm

Contact Us Now:  
**+91 94787 68383**

# കേരളം കേരളം സൂര്യരം

## ലോകത്തെ കേരളം കാണിക്കൂ!

കേരളത്തിന്റെ ഭംഗി ലോകത്തെ അറിയിക്കാൻ കേരള ടൂറിസം വകുപ്പിനൊപ്പം നിങ്ങളും പങ്കുചേരു. സ്വന്തം നാടിന്റെ ഒരു വീഡിയോ തയ്യാറാക്കി നിങ്ങളുടെ സോഷ്യൽ മീഡിയ പേജിൽ [#entekeralamennumsundaram](https://www.instagram.com/entekeralamennumsundaram) എന്ന ഹാഷ്ടാഗിൽ കേരള ടൂറിസത്തിന്റെ ഔദ്യോഗിക ഫേസ്ബുക്ക്/ഇൻസ്റ്റഗ്രാം പേജ് ടാഗ് ചെയ്ത് (@keralatourism) അപ്ലോഡ് ചെയ്യൂ. തിരഞ്ഞെടുക്കുന്ന മികച്ച ദൃശ്യങ്ങൾ ടൂറിസം വകുപ്പിന്റെ ഔദ്യോഗിക മ്യൂസിക് വീഡിയോയിൽ ഉൾപ്പെടുത്തുന്നതാണ്.

Matri.com



കേരള സർക്കാർ





## **Start Fresh with us – Nature's Best and Authentic**

**Wayanadcraft Spices – Pure, Authentic  
& Certified Organic.**

**Handpicked from the misty hills of Wayanad and  
trusted organic farms across India, our spices are  
rich in natural oils, free from  
chemicals, and freshly packed to order.**

**NPOP & PGS-India Certified | Farm to  
Your Kitchen | Naturally Flavourful**



**Scan this QR Code  
to Shop Now**



**Web: <https://shop.wayanadcraft.com>  
Email: [hello@wayanadcraft.com](mailto:hello@wayanadcraft.com)  
WhatsApp: +91 9886559991**



# FUNDING YOUR DREAMS

Kerala Financial Corporation Offers a diverse range of loan schemes, including **CMEDP (Chief Minister's Entrepreneurship Development Programme)**, **KFC Startup Kerala**, **Term loans**, **Working capital loans**, and specialized schemes for sectors like **Tourism**, **Agriculture**, and **Manufacturing**.

- ◆ **Attractive interest rates starting from 5% facilitated by government subsidies and KFC rebates.**
- ◆ **Offers collateral-free loans of up to 2 crores for eligible startups**

**Kerala Financial Corporation**  
**Partnering with Kerala for Progress**

**APPLY NOW** >>

**Your business  
journey starts  
here**



0471 2737500  
[www.kfc.org](http://www.kfc.org)



[keralafinancialcorporation](https://www.facebook.com/keralafinancialcorporation)



[krfincorp](https://www.instagram.com/krfincorp)



[keralafincorp](https://twitter.com/keralafincorp)




[KeralaFinancialCorporation](https://www.youtube.com/KeralaFinancialCorporation)



[www.kfc.org](http://www.kfc.org)

# WITH CONFIDENCE, WE GO FURTHER



German   
Technology

When Everything Counts.



Continental Tires celebrates 150 years of Confidence - in our tire expertise, German engineering, and uncompromised quality and performance.

With confidence, we go further into the new tomorrow.

**TPS INDIA**, BH Arcade, Geethanjali jn, Kochi | **THE PITSTOP**, Rohini Metro Pillar no.102, Company Padi, Aluva | **THE PITSTOP**, Rohini Adkathbail, Kasargod, | **THE PITSTOP**, Shadh Towers, Pumpwell, Mangalore, kamataka | Contact; **9645090665, 9447090665**, | E-mail: [tpsindiakl@gmail.com](mailto:tpsindiakl@gmail.com)



# SECURE YOUR BUSINESS FOR 90 YEARS AT 10% OF THE COST!



Seize this exceptional opportunity to anchor your industry in Kerala! Our Unified Land Lease Policy provides 90 years of land ownership in any of our KSIDC/KINFRA parks across Kerala for only 10% of the total premium. With cutting-edge infrastructure and unparalleled support, your business is set for remarkable growth!

INVESTMENT	INITIAL PAYMENT	PAYMENT* PERIOD	LEASE PERIOD	MORATORIUM
Above 100 Cr	10%	9 years	90 years	24 months
50 Cr - 100 Cr	20%	5 years	60 years	24 months
Up to 50 Cr	20%	5 years	60 years	Nil

\*Interest applicable as fixed by the agency. T&C Apply

Matri.com



Department of Industries  
Government of Kerala

For more information,  
visit: [www.kinfra.org](http://www.kinfra.org) or  
contact: +91 87148 44470

**Responsible Investment. Responsible Industry.**

# Contents



## KERALA INDUSTRIES

A DECADE OF POLICIES, INNOVATION, INCLUSION & IMPACT (2016-2025)



12 **HEALING WITH VISION**  
DR. SANDHYA K.S. TRANSFORMING  
PATIENT-CENTRIC HEALTHCARE



**THE GOLDEN CHARIOT**  
A JOURNEY THROUGH SOUTH INDIA'S  
LIVING HERITAGE

26 **CORDON BUILDERS**  
BUILDING HOMES, DELIVERING TRUST



Editor & Publisher	:	Nijith Raj
Executive Director	:	Sajitha Beegum
Editorial Assistant	:	Maneesh T.M.
Art Director	:	Kiran Mohan
Creative Head	:	Naveen A
Photographer	:	Arun S
Correspondent	:	Ferzeen Banu
Correspondent	:	Priya Gomez
Manager Sales & subscription	:	Jayaprakash
Manager- Marketing	:	Feni Felix
Business Development Officer	:	Vishnu U



Enquires : [fefeibs247@gmail.com](mailto:fefeibs247@gmail.com)  
+91 623 84 899 86

## Editor's Desk

As a new year unfolds before us, it brings with it a renewed sense of hope, possibility, and purpose. The beginning of the year has always symbolised more than a change in dates. It represents a collective belief in fresh starts, clearer vision, and a better, brighter future. It is a moment to pause, reflect on how far we have come, and look ahead with confidence and optimism.

This edition of Hues of Life is shaped by that very spirit. It is a celebration of success in its many forms, of individuals, institutions, and ideas that have dared to dream, persevered through challenges, and turned vision into impact. Every story within these pages stands as a reminder that progress is built on belief, resilience, and the courage to rise beyond limitations.

The year ahead invites us to think bigger and aim higher. It encourages innovation, leadership, and the confidence to explore new horizons. When we celebrate success, we do more than acknowledge achievement. We create inspiration. Success has the power to motivate, to build momentum, and to remind us that growth is always possible. Through this edition, we seek to cheer those who have achieved remarkable milestones and to inspire those preparing to begin their own journeys.

At Hues of Life, we believe stories shape mindsets and influence the future. As we step into this new year, our focus remains on narratives that encourage progress, foster positive change, and highlight excellence across sectors. We continue to bring forward voices that push boundaries, uplift communities, and redefine what success means in a changing world.

As you turn these pages, we hope you find motivation, encouragement, and a renewed drive to pursue your aspirations. The horizon is open, opportunities are abundant, and ambition knows no limits. The sky is the limit for those who believe in a brighter tomorrow and work towards it with purpose.

Here's to a year filled with hope, achievement, and endless possibilities.

Warm regards,

**Nijith Raj**  
Editor & CEO  
[editor@huesoflife.online](mailto:editor@huesoflife.online)  
[www.huesoflife.online](http://www.huesoflife.online)

*Happy  
New  
Year*

This periodical is published by Nijith Raj from 24/606, Jayani, Valiyakunnu Post Office, Kizhuvaram, Kizhuvaram-Koonthallor Road, Thiruvananthapuram, Kerala, 695104 on behalf of Fefe Intelligent Business Solutions, edited by Nijith Raj and printed by SB Press Private Ltd at College Road, Statue, Thiruvananthapuram, Kerala, 695001.

Editor: NIJITH RAJ.



## A Season That Ended with a New Start: The Journey Continued

As the final lights dimmed and the last echoes of celebration slipped gently into silence, the Christmas and New Year season revealed its quiet power. It did not simply fade away. It lingered. What began in warmth and reflection slowly transformed into renewal and resolve, leaving behind a sense that something within and around us had shifted. The season ended, but the journey continued.

Christmas arrived like a pause the world deeply needed. Time slowed, offering a brief pause from its relentless pace. Homes filled with voices that had waited too long to be heard, and hands reached out in kindness without calculation. The season carried the spirit of hope, compassion, and goodwill, reminding people of who they were beneath the weight of routine and responsibility. It was not only a celebration, but a moment of reflection. A chance to look back at the year that had passed, to acknowledge both joy and struggle, to forgive what could not be changed, and to be grateful for what endured.

There was a depth to those days that words often struggled to capture. Familiar traditions returned, carrying memories from years gone by, while new moments quietly took their place. Laughter echoed around tables, silence was respected in moments of thought and prayer, and generosity appeared in gestures both seen and unseen. Christmas softened hearts and reminded people that strength and kindness could exist together, and that giving often carried a meaning far greater than receiving.

As the warmth of Christmas settled, anticipation slowly began to rise. New Year arrived not with hesitation, but with intent. It did not erase the past; it responded to it. Where Christmas invited reflection, New Year encouraged resolve. It became the moment when people dared to look forward with renewed clarity, shaping hopes informed by experience rather than impulse. Across cities and villages, voices counted down together, marking a shared passage from what had been to what could be.

When the moment arrived, time seemed to hold its breath before moving on. New Year symbolised renewal, not as a dramatic reinvention, but as a conscious realignment. Promises were made quietly, resolutions were formed honestly, and aspirations were shaped with greater purpose. It was less about grand declarations and more about meaningful intent, a collective understanding that change began with awareness and choice.

What made this season truly powerful was the way the two celebrations flowed into one another. Christmas and New Year did not stand apart. They belonged together. One closed a chapter gently, the other opened the next with hope. Christmas allowed people to make peace with the past, while New Year offered courage to imagine the future. Together, they formed a seamless transition from reflection to renewal, turning the year's end into a passage rather than a conclusion.





*Across the world, this season unfolded in countless forms. Some celebrated through faith and tradition, others through music, lights, and shared meals. In some places, it was marked by quiet family gatherings, while elsewhere it filled streets with colour and sound. Yet beneath every expression lay the same emotion. Joy was found in togetherness, generosity in giving, and hope in the promise of tomorrow. In those moments, borders softened and differences faded, replaced by a shared human longing for peace, progress, and connection.*

*As the celebrations drew to a close and daily routines slowly returned, the season did not lose its meaning. It lingered in renewed relationships, clearer intentions, and a softened outlook on life. The pause created by Christmas and New Year allowed people to realign priorities and rediscover what truly mattered. It reminded them that life was not defined solely by speed or achievement, but by moments of purpose and presence.*

*The season also offered a lasting lesson. Endings were not losses, but necessary transitions. They gave shape to beginnings and depth to growth. The close of the year did not erase the past; it carried its lessons forward. Failures transformed into understanding, successes became foundations, and hope took root in the possibilities ahead. Renewal followed, not loudly or hurriedly, but steadily and with intention.*

*In the days that followed, when decorations were packed away and celebrations became memories, the journey continued quietly. People carried forward the warmth they had felt, the promises they had made, and the clarity they had gained. The season had fulfilled its purpose. It had offered closure without finality, renewal without pressure, and optimism grounded in reflection.*

*Christmas and New Year together became more than celebrations on a calendar. They became a rhythm of life itself, where reflection led to renewal and endings opened the door to beginnings. The lights faded and the noise settled, but something enduring remained. A sense of continuity. A belief in fresh starts. The season ended, but the journey continued, guided by hope, strengthened by experience, and open to all that lay ahead.*



## HEALING WITH VISION

DR. SANDHYA K.S. TRANSFORMING PATIENT-CENTRIC HEALTHCARE



DR. SANDHYA KS  
CEO, SK HOSPITAL

*“Blending clinical expertise, strategic leadership & community impact to redefine holistic healthcare in Kerala.”*

**D**r Sandhya K S stands at a rare and powerful intersection—where medicine meets management & institutional leadership aligns with social purpose. A trained physician with advanced credentials in hospital administration, she has emerged as a

- visionary healthcare leader who has reshaped the way care is delivered. As CEO of SK Hospital, Trivandrum, her influence extends far beyond clinical outcomes, encompassing patient-centered systems, preventive health, integrated wellness & meaningful community engagement. Her journey reflects a thoughtful balance of professional rigor, innovation & responsibility, positioning her among the most influential voices in regional healthcare today.

Her career began in clinical practice, where hands-on patient care shaped a deep understanding of healthcare delivery. Over time, a drive to strengthen systems led her into hospital administration, giving her a dual perspective that balances operational excellence with uncompromising compassion.

Under her leadership, SK Hospital achieved NABH accreditation, reaffirming its adherence to the highest standards of quality and patient safety. The Neonatal ICU within the Department of Pediatrics also earned Level II NNF accreditation, highlighting the hospital's commitment to advanced neonatal care. Recognising the critical role of technology in contemporary healthcare, she spearheaded a hospital-wide digital transformation. This initiative enhanced patient record management, streamlined administrative workflows, and significantly improved overall efficiency—creating a more seamless experience for both patients and caregivers.

***“True healthcare leadership lies in building systems that heal with efficiency, empathy, and foresight.”***

Operational improvements were strengthened by carefully planned financial and strategic initiatives. Dr. Sandhya introduced cost-effective procurement practices for medicines and medical supplies, optimising inventory management while maintaining uncompromising quality standards. Equally important was her focus on manpower. She implemented structured staff development programmes that fostered collaboration, encouraged continuous learning, and supported professional growth across doctors, nurses, and administrative teams—creating a culture of shared purpose and accountability.

Through partnerships with Nagarjuna Ayurveda and the 360 Degree Spine Wellness Centre, Dr. Sandhya expanded SK Hospital into an integrated care destination combining Ayurveda, rehabilitation, & advanced non-

invasive therapies to support recovery and long-term wellness.

Beyond the hospital, her community initiatives include a large-scale anti-tobacco and anti-drug campaign & women's safety programmes conducted in collaboration with the Kerala Police.

***“Hospitals must evolve beyond treatment spaces to become centres of prevention, rehabilitation, and holistic well-being.”***

At the core of Dr. Sandhya's philosophy is a belief that healthcare must be comprehensive & forward-looking. She advocates for care models that bring advanced technology, preventive programmes, Ayurveda, rehabilitation, and holistic therapies under one roof. This integrated vision has guided SK Hospital's growth and positioned it as a model for patient-centric care in the region.

Beyond her professional role, Dr. Sandhya's life is enriched by cultural and personal pursuits. A trained singer and State-Level winner of Eternal Voice of Doctors (IMA Jaipur), she also enjoys solo travel, cooking, and lifelong engagement in sports and cultural activities—interests that bring balance, perspective, and quiet depth to her leadership.

Looking ahead, Dr. Sandhya envisions expanding SK Hospital as an integrated care destination that supports long term physical, emotional, and mental well being. Her leadership is defined by a clear strategy that delivers uncompromising quality, builds efficient and people centric systems, and responds meaningfully to community health needs.

Under her guidance, SK Hospital has evolved into a recognised institution offering specialised and holistic healthcare solutions. More than an administrator, Dr. Sandhya represents a purposeful approach to healthcare leadership where clinical excellence, operational clarity, and social responsibility come together to create lasting impact.

# SK HOSPITAL

## BUILDING A COMPREHENSIVE TERTIARY CARE ECOSYSTEM IN SOUTH KERALA

**S**K Hospital, located in Thiruvananthapuram, Kerala, operates today as a tertiary care super specialty institution with more than 300 beds and over 40 clinical departments. Its current scale and clinical breadth reflect a sustained process of capacity building that began in 2003, when the hospital was established to address the lack of organized hospital infrastructure in the south eastern region of the city. Rather than emerging as a single phase development, SK Hospital's growth has been shaped by sequential investments in specialties, technology, and clinical systems over a period exceeding two decades.

Founded by Engineer K. N. Sivankutty and inaugurated by the then Chief Minister of Kerala, A. K. Antony, the hospital commenced operations with 35 beds and a limited number of departments. The early focus was on providing dependable secondary care services to a population that previously relied on distant facilities for even basic hospital treatment. Over time, this role expanded as the institution added specialist services, critical care capacity, and advanced diagnostic infrastructure.



At present, SK Hospital functions as a full spectrum tertiary care provider. The hospital maintains specialized units for cardiology, cardiothoracic surgery, neurology, neurosurgery, nephrology, urology, orthopedics, oncology, gastroenterology, pulmonology, pediatrics, neonatology, obstetrics and gynecology, and critical care medicine. This breadth enables the hospital to manage both routine and complex clinical cases under a single institutional framework.

A significant component of the hospital's infrastructure is its critical care capability. The hospital operates a multi tier intensive care system that includes a 17 bed critical care unit, a 12 bed intensive coronary care unit, a dedicated cardiothoracic surgical ICU, a pediatric ICU, and a level III neonatal intensive care unit. These units support high acuity care across cardiac, neurological, surgical, and neonatal specialties, allowing the hospital to function as a referral center for complex cases within the region.

Emergency services at SK Hospital are structured to operate continuously, with a 24 hour emergency department designed to meet international operational standards. The department manages a wide range of emergencies including cardiac events, poly trauma, neurological emergencies, respiratory failure, poisoning, drowning and more. The integration of emergency medicine with in house specialty teams and diagnostic services allows for rapid clinical decision making and intervention.

The hospital has made targeted investments in advanced procedural and diagnostic technologies. Its cardiology department is supported by a modern cardiac catheterization laboratory equipped for interventional procedures such as primary angioplasty, valve replacement, pacemaker implantation, and peripheral angioplasty. Advanced imaging modalities including MRI, CT scanning, digital radiography, ultrasonography, and color Doppler are integrated through a PACS based radiology system.

In gastroenterology and pulmonology, SK Hospital has incorporated specialized diagnostic and interventional capabilities that remain limited in availability within the state. These include endoscopic ultrasound, double balloon endoscopy, capsule endoscopy, and advanced interventional pulmonology services such as EBUS and bronchoscopy.

Organ transplantation represents a significant expansion of the hospital's clinical scope. SK Hospital has established dedicated infrastructure for renal and liver transplantation, including transplant operation theatres and specialized transplant intensive care units. The hospital has successfully performed live donor liver transplant surgeries and is recognized as a center for renal transplantation.

SK Hospital's approach to quality and safety is formalized through NABH accreditation, achieved in 2022. Infection control programs include continuous surveillance, antibiotic stewardship based on institutional antibiograms, and structured protocols to prevent healthcare associated infections.

Beyond clinical care, the hospital contributes to medical education through DNB programs in General Medicine and Surgical Gastroenterology, and an IDCCM program in critical care medicine. These programs reinforce clinical rigor and workforce development.

SK Hospital's development illustrates how sustained institutional focus on infrastructure, clinical capability, and quality systems can transform a regional hospital into a comprehensive tertiary care provider.





**Shri. M. Sreevatsan**  
Zonal General Manager  
Zonal Office - Chennai  
(Kerala, Tamil Nadu, Pondicherry)  
The National Small Industries  
Corporation Limited  
(Ministry of MSME – Govt. of India)

All economic needs for a flourishing nation can be addressed by industrial growth – both horizontal and vertical. And when we mention industry, it boils down to a resilient MSME sector, which comprises the major portion. It also has a unique feature of being diverse in its nature, style of operation, and needs.

Such a want can only be fulfilled by an organization that is equally diverse in its activities and flexible in dovetailing its services in line with the needs. For this, a thorough understanding of the sector is warranted.

NSIC is that organization which has all facilities. It acts like a one-stop shop for an MSME. The scope of support is ever increasing. Donning the role of a facilitator, NSIC helps MSMEs utilize machines like CNC and VMC for intricate machining without actually having to invest in creating infrastructure.

It also provides a Credit line for raw material procurement, which is a lifeline for many businesses. Creating a market for the sector is a very important mandate, enabled through registration that aids in engaging with government departments – a tool for tapping PPP (Public Procurement Policy) opportunities ensuring 25% of government purchases to MSME, 3% to women and 4% to SC/ST units. Now this being government markets, E-Commerce is also part of NSIC's endeavor to promote market of an MSME in the form of B2B portal and further through an initiative of the Ministry TEAM on an ONDC platform.

Increasing access to credit is an important factor, for instance. Through logical linkages with the banking fraternity and by offering a platform that serves as an aggregator, NSIC passes on the benefits of economies of purchase to MSMEs, automatically making them more competitive.

NSIC has emerged as a friendly solution provider for all challenges faced by the sector – be it in the input or output stages of the evolutionary cycle of MSMEs. You name it, NSIC has it.



# NATIONAL SMALL INDUSTRIES CORPORATION LTD.

( Ministry of MSME, Government of India Enterprise)

## COMMITTED TO SERVE MSMEs

### FACILITATING MSMEs THROUGH MARKETING AND CREDIT SUPPORT PROGRAMS

#### Single Point Registration for Govt. Purchases:

Micro/Small Enterprises registered under this Scheme are eligible to get the benefits under.

“Public Procurement Policy for Micro & Small Enterprises (MSEs) Order 2012” as notified by the Government of India, Ministry of Micro Small & Medium Enterprises, New Delhi vide Gazette Notification dated 26.03.2012.

#### Digital Services Facilitation through Aggregation Services.

Over the last few decades, Information, Communication and Technology has taken on a significant role for business activities responsible for driving growth. In most cases, it has become a key enabler for competitiveness, better quality of service, lower processing costs or even better support for MIS. In some cases, making the right choices and investing in the right digital technologies is the key to success.

In order to facilitate MSMEs in terms of Technology adoption and achieve higher business efficiencies, business automation and compliances, NSIC operates as an aggregator and facilitator of ICT Enabled Digital Services to MSMEs on transparent and affordable prices by way of on-boarding various service providers offering different products/ services that are required by MSMEs for adopting the digital ways of managing their businesses.

#### ICT Enabled Digital Services and Scope for Service Providers:

1. Software Services (Such as ERP, Accounting, Manufacturing Design, Regulatory Compliance including GST, other software packages etc)
2. Cloud Services [Platform as a Service (PaaS), Software as a Service (SaaS)]
3. Digital Infrastructure (IaaS, Hardware, Smart devices]
4. Artificial Intelligence Solutions

5. Internet of Things (IoT) and Machine to Machine (M2M) solutions

6. B2B and B2C E-Commerce Solutions

7. Other ICT Enabled Digital Services

Services providers in these sub-categories can apply online for empanelment with NSIC at NSIC MSME Aggregation Service. A commercial MOU would be signed with each service provider on a non-exclusive basis. All such service providers, including MSMEs, may be on-boarded who have the potential to serve the MSME units and their products and services are relevant for MSMEs. To begin with only those service providers would be empanelled whose products/services are available on “off-the-shelf” basis and can be availed by the MSMEs on a “plug-n-play” model. NSIC will charge 6% service charge for the role of aggregator.

#### B-2B Portal / Info Services :

Information provided on domestic / global Business, Buyers, Tenders, Technology, joint ventures etc. Facility for web development, product hosting, WAP services, virtual exhibitions and lot more available.

#### Credit Facilitation under Bank Tie-Up:

Finance up to any limit in the form of Cash Credit, bills, LC / BG and Term Loan from 16 Banks (State Bank of India, Canara Bank, Union Bank of India, UCO Bank, CBS, Karur Vyasa Bank, YES Bank, Axis Bank, Central Bank of India, Bank of Maharashtra, Bank of Baroda, IDBI and Indus Ind Bank etc.)

#### Raw Material Assistance:

Financial assistance upto 180 days is provided for purchase of Raw Materials against Bank Guarantee.

#### Bulk Raw Material Distribution:

Distribution of raw materials produced by primary producers like SAIL, Arcelor Mittal Nippon Steel (AMNS), VIZAG Steel, NALCO, Polymers, Paraffin Wax, etc. to MSME at competitive rates with credit support against security of Bank Guarantee for 180 days.

## NATIONAL SMALL INDUSTRIES CORPORATION LTD.

Branch Office : S-67 GCDA Commercial Complex Marine Drive, Cochin

FOR FURTHER DETAILS, PLEASE CONTACT

Ms. Grace Reji , Branch Manager , 9824153932



# WAYANADCRAFT SPICES & HANDICRAFTS

BLENDING HERITAGE, ARTISTRY AND ETHICAL CULTIVATION

In a world where products travel through complex industrial pathways before reaching consumers, Wayanadcraft offers a refreshing contrast. Rooted in the serene landscapes of Wayanad in Kerala, the company brings forward a philosophy that blends purity, personal responsibility and a deep respect for the land. Its identity is shaped not by aggressive commercial ambitions but by a commitment to offering products that are clean, honest and handled with genuine care.

Wayanadcraft was established with a clear belief that customers deserve access to naturally grown, chemical free products. Every spice packet and handcrafted wooden piece that leaves the company is processed manually within the founders home environment and packed with meticulous attention to hygiene. It is a deliberate choice that reflects the organisation's values. Instead of industrial scale operations, Wayanadcraft places sincerity at the centre of its work, ensuring that every step is guided by responsibility and authenticity.

### A Mission Shaped by Care, Not Commerce

The company's purpose goes beyond the usual frameworks of pricing, profit and competition. Wayanadcraft describes its work as an expression of care, motivated by the desire to deliver wholesome, toxin free products to as many people as possible. Its philosophy rejects shortcuts and avoids practices that compromise quality or the wellbeing of consumers. This approach is not positioned as a marketing claim but as a foundational principle that guides daily operations.





The same spirit extends to the company's handicrafts division, where eco-friendly wooden artworks are shaped from roots, stems and natural materials sourced from the founder's own plantation. These pieces are not produced for scale but created with patience, intention and the artistic sensibility of traditional craftsmanship. Together, the spice range and the handcrafted collection create a unified brand identity, one that values purity, sustainability and authenticity.

### **At the Helm: The Leadership Philosophy of Sreekumar Maranghat Sambhu**

The vision behind Wayanadcraft originates from the personal journey of its founder, Sreekumar Maranghat Sambhu. Raised in a middle-class farming family, Sreekumar grew up surrounded by the rhythms of agricultural life. During school vacations, he helped on the family farm and assisted in selling produce to wholesalers, experiences that quietly rooted in him an appreciation for honest cultivation and hands on labour.

For nearly two decades, Sreekumar worked in the information technology sector, providing solutions for major multinational companies. His professional life grew steadily, yet his connection to farming remained alive beneath the surface. Over the years, the desire to return to agriculture evolved into a clear vision: to cultivate and offer spices that were entirely free from chemical contamination, and to do so with transparency and integrity.

In January 2023, Sreekumar transformed that vision into reality with the founding of Wayanadcraft. His approach to the

business mirrors his values. Instead of outsourcing key processes or following mainstream commercial patterns, he chose to keep cultivation, processing and packaging deeply personal and closely monitored. Every product is handled with the kind of care that reflects a direct relationship between the producer and the consumer.

Alongside spice cultivation, Sreekumar brought another passion into the company's identity. Since childhood, he enjoyed creating wooden sculptures from natural materials he found on his family's land. Stems, roots and shells became the basis of handcrafted art he shaped with curiosity and creativity. These pieces, once private expressions of interest, now form part of Wayanadcraft's offerings, giving the company a second dimension rooted in artistry and environmental respect.

Sreekumar's leadership is characterised by calm conviction rather than commercial intensity. He focuses on maintaining purity in cultivation, preserving the handmade nature of the products and ensuring that customers receive goods that are trustworthy and genuinely natural. His return to the land is not a departure from his earlier career but a continuation of his values, expressed through work that feels both meaningful and grounded.

### **Integrity as the Foundation for Growth**

Wayanadcraft continues to evolve, but its growth remains aligned with the principles on which it was founded. The company's strength lies in its refusal to compromise on quality or adopt practices that clash with its values. By keeping production close to home and maintaining strict manual processes, it ensures that purity is not an abstract claim but a tangible reality.

Customers who seek chemical free spices or sustainable wooden art find in Wayanadcraft a brand that speaks with honesty and delivers with care. Its identity is defined not by scale but by substance. Each product reflects the land it comes from and the personal commitment of the founder who shapes the company's direction.

As Wayanadcraft moves forward, its path is guided by the same intention that sparked its creation: to offer products of genuine purity, to remain connected to the traditions of the land and to grow through trust rather than tactics. The story of Wayanadcraft is still unfolding, but its foundation is strong, built on roots that run deep and a vision that remains clear and uncompromised.

| Web: <https://shop.wayanadcraft.com>

| Email: [hello@wayanadcraft.com](mailto:hello@wayanadcraft.com)

| WhatsApp: +91 9886559991



# KERALA INDUSTRIES:

## A DECADE OF POLICIES, INNOVATION, INCLUSION & IMPACT (2016–2025)

By Gautham Yogeeshwar S, Deputy Director Directorate of Industries & Commerce

**K**erala's industrial landscape has changed dramatically between 2016 and 2025. This period marks a profound shift in the state's economic philosophy, moving away from incremental adjustments to a purposeful, multi-pronged strategy for industrial growth. What began as a series of necessary reforms has matured into a tightly coordinated state mechanism that addresses every facet of the industrial ecosystem: from attracting global capital to unlocking grassroots entrepreneurship.

The overarching vision combined several critical elements simultaneously: robust investor facilitation, aggressive Public Sector Undertaking (PSU) turnaround, dedicated MSME scale-up support, large-scale infrastructure creation and a strong, non-negotiable focus on sustainability and inclusivity. This is the compelling story of how a strategic integration of modern policy, advanced digital systems and unprecedented district-level outreach together rewired the state's industrial DNA, setting a new, accelerated rhythm for economic development.

### Policy Architecture & Digital Governance

The foundation of this transformation was the Kerala's Industrial Policy 2023, a document that not only articulated a vision but set clear, actionable sector priorities. The state consciously targeted future-proof, high-value industries: Aerospace & Defence, EVs, Electronics & Semiconductors, Food Tech, Biotech, Logistics,



**Gautham Yogeeshwar S**



Renewable Energy, IT/ITES, and Tourism. This focused approach ensured that public resources and administrative attention were channeled into areas with the highest potential for creating quality employment and sustainable wealth.

To anchor these sectors, the policy introduced a comprehensive incentives frame explicitly designed to attract responsible, high-value projects. This went beyond simple tax breaks, incorporating State GST refunds, investment subsidy, employment incentives linked to job creation, stamp duty exemptions, and crucial certification support. The message was clear: Kerala is looking not just for investment, but for quality, technology-driven investment.

The real revolution, however, lay in the digital delivery of governance. K-SWIFT (Kerala Single Window Interface for Fast & Transparent Clearances) and K-CIS (Centralised Inspection System) became the digital pillars that structurally reduced friction for investors and entrepreneurs. K-SWIFT integrated 22 key departments and made over 120 services available online, accessible through a single point of entry. It introduced automated, non-discretionary timelines, such as the mandated 30-day resolutions for standard clearances and, symbolically, the one-minute clearance for certain investment thresholds. These platforms, coupled with a dedicated round-the-clock Investor Facilitation Centre, successfully created a reliable, predictable and transparent investor experience that is now benchmarked nationally.

**Entrepreneurship & MSME Transformation | Year of Enterprises & Mission 1000**

The state’s greatest strength lies in its human capital, and this was leveraged through an audacious campaign for grassroots industrialisation. The Years of Enterprises campaign (2022–24)

successfully unlocked this potential at the district and local levels, resulting in the registration of a staggering 211,042 new enterprises and the generation of nearly 4.5 lakh jobs. This achievement demonstrated a profound willingness among the populace to embrace entrepreneurship.

Building on this powerful momentum, the state launched the MSME Scale-Up Mission, aptly named “Mission 1000.” This initiative is designed to transition the most promising micro and small enterprises into mid-corporates. It provides targeted support for 1,000 identified firms in the manufacturing and service sectors with the ambition of helping each achieve ₹100-crore turnovers. This mission expects a collective gross turnover of one lakh crores in the State from these units. The support is substantive, offering a targeted capex subsidy (up to 40%, limited to ₹200 lakhs), working capital interest rebates limited to ₹50 lakhs, DPR support up to one lakh, and intensive one-to-one handholding. Mission 1000 represents the state’s focus on growth acceleration.

**Brand Kerala & Market Enablement**

To ensure that locally manufactured goods achieve global recognition, the ‘NANMA’ brand was established to build the ‘Made in Kerala’ identity. This umbrella brand helps quality enterprises access export markets and participate effectively in trade fairs. Furthermore, the strategic utilisation of Central schemes like PMFME and various cluster programmes improved formalisation, facilitating access to crucial certifications, modern processing facilities, HACCP compliance, and incubation support, thereby directly linking local production to global consumption standards.

**PSUs, Traditional Sectors & Skills | PSU Turnarounds and Modernisation**

A key achievement of the decade was the successful turnaround of Kerala’s Public Sector Undertakings. This was not achieved through divestment, but through a dedicated programme of governance reforms, ERP rollouts, asset optimisation and performance MoUs. These measures injected corporate efficiency into state-owned enterprises. The results are quantifiable: Keltron achieved a record revenue of over ₹1,056 crore, and KMML posted an operational profit of ₹107.67 crore. The Board for Public Sector Transformation’s periodic assessments validated widespread

performance improvements, restoring the financial health and competitive edge of many state companies.

### **Coir, Plantations and Traditional Crafts Reimagined**

The state also provided critical attention to its traditional agro-industrial base. Kerala's coir sector was revived through a focus on modernization and worker welfare. Key interventions included the establishment of the Fibre Bank and the Coir Revolving Fund, alongside significant investment in mechanisation, leading to the installation of over 1,500 automatic spinning machines. This improved productivity and exports, backed by over ₹800 crore in financial supports for co-operative societies, ensuring both economic viability and improved worker welfare. Simultaneously, the establishment of India's first Directorate of Plantations (2021) and securing KERA (Kerala Climate Resilient Agri Value Chain Modernisation) funding strengthened agro-industrial value chains, reflecting a forward-looking, climate-resilient approach.

### **Infrastructure & Mega Investments | Industrial Parks & Corridor Model**

Underpinning the policy successes is a robust infrastructure strategy built on a corridor model. KINFRA's network now includes 34 modern parks and over 147 industrial zones across the state, ensuring decentralized growth. Furthermore, the Directorate of Industries & Commerce (DIC) pioneered new campus industrial parks tied to colleges, alongside encouraging private industrial estate permits. The introduction of a focused industrial park rating system ensured quality control, supporting rapid absorption of new investments and facilitating plug-and-play units. The focus has been on creating anchor ecosystems for next-generation industries like Graphene, life-science parks, petrochemical hubs, and Meds/Robotics parks.

### **Big-Ticket Investments**

The successful implementation of these systems culminated in the Invest Kerala Global Summit 2025, which generated ambitious Expressions of Interest (EOIs) valued at approximately ₹1.8 lakh crore. These commitments signal global confidence in the state's industrial climate. Major project commitments include advanced vaccine facilities (Bharat Biotech), aerospace/defence manufacturing (Safran), global technology centres (IBM, HCL Tech) and large logistics setups (Adani, Sharaf). These ventures are poised to add thousands of direct and indirect jobs while anchoring high-value supply chains within the state.

### **Recent Panchayat Raj Act Amendments & Nano Household Enterprises**

Many of Kerala's most dynamic enterprises are the small, home-based or micro units, the so-called "nano" industrial activities that produce high social value and distributed employment across the state. The state realised that even the efficiency of K-SWIFT at the state level was incomplete without clearing local hurdles.

The most recent changes in Panchayat Raj law and rules (2024–2025) were explicitly designed to make local licensing simpler, faster, and more enabling for such enterprises. These changes strategically complement state industrial policy and the single-window systems by bringing permission simplicity down to the village-level, ensuring that every entrepreneur, regardless of scale, can operate seamlessly.

Kerala's decade of reform shows that industrial transformation is as much about systems design as it is about capital injection. By combining state policy, investor facilitation systems, PSU governance, robust sectoral programmes, and now, Panchayat-level licensing reforms, the state has created a tightly coordinated ecosystem where nano units and mega projects can each find their appropriate space to thrive. The latest Panchayat Raj amendments complete this symphony bringing necessary permission simplicity to the remotest village-level while safeguarding community assets cementing a truly inclusive industrial future for Kerala.



കേരള വൈറ്റ്സ്റ്റോക്ക് ഡെവലപ്മെന്റ് ബോർഡ്

ഗോകുലം, പട്ടം, തിരുവനന്തപുരം

☎ 0471 2440920, 2449138 ✉ kldboard@gmail.com

# ക്ഷീരകർഷകർക്ക് കൈത്താങ്ങായി വിവിധ പദ്ധതികൾ



- മാട്ടുപ്പെട്ടി, ധോണി, കുളത്തുപ്പുഴ സെമൻ ബാങ്കുകൾക്ക് തുടർച്ചയായി ഗവൺമെന്റ് ഓഫ് ഇന്ത്യയുടെ 'എ' ഗ്രേഡ് സർട്ടിഫിക്കറ്റ്
- നാടൻ പശു സംരക്ഷണത്തിന് വിപുലമായ പദ്ധതികൾ
- കുളത്തുപ്പുഴ, മാട്ടുപ്പെട്ടി, കോലാഹലമട് എന്നിവിടങ്ങളിൽ ഹൈടെക് ബുൾ മദർ ഫാമുകൾ
- സമ്പൂർണ്ണ സൗകര്യങ്ങളോടു കൂടിയ അത്യാധുനിക ജീനോമിക് ഗവേഷണ കേന്ദ്രം (ജീനോമിക് ലാബ്)
- വെച്ചൂർ, സഹിവാൾ ഇനങ്ങളിൽ ഭ്രൂണമാറ്റ പദ്ധതി
- ധോണിയിൽ ഫോഡർ പെല്ലെറ്റിംഗ് യൂണിറ്റ്

- ബീജമാത്രകളുടെ ഗുണമേന്മ നിലനിർത്തികൊണ്ട് ഡീപിഫ്രീസീംഗ് സാങ്കേതിക വിദ്യ ഉപയോഗപ്പെടുത്തി വിദൂരസ്ഥലങ്ങളിലേയ്ക്ക് ബീജമാത്രകൾ എത്തിക്കുന്ന രീതി
- പുത്തൂരിൽ പുതിയ ആട് പ്രജനന കേന്ദ്രം
- വാഗമണ്ണിൽ പുതിയ പന്നി പ്രജനന കേന്ദ്രം
- ലിംഗനിർണയം നടത്തിയ ബീജമാത്രകൾ സംസ്ഥാനത്തു ലഭ്യമാക്കി
- ആടുകളിൽ കൃത്രിമ ബീജാധാനത്തിന് വിപുലമായ പദ്ധതി
- വെച്ചൂർ, കാസർഗോഡ് കുളളൻ, സഹിവാൾ, ഗിർ, റാത്തി, റെഡ് സിന്ധി ഇനപ്പുറകളുടെ ബീജം ലഭ്യമാക്കി
- മലബാറി, ബോയർ, ബീറ്റൽ, സിരോഹി, ആട് ഇനപ്പുറകളുടെ ബീജം ലഭ്യമാക്കി
- തീറ്റപ്പുൽ കൃഷി വ്യാപന പദ്ധതികൾ

**കർഷകർക്ക് ധനസഹായം**  
കുടുംബശ്രീ മുഖേന തീറ്റപ്പുൽ കൃഷി ഏകദൈനാനിനു 16,000/- രൂപ



# AAROHANA CORPORATE SOLUTIONS PVT. LTD.

## BUILDING INTEGRATED PATHWAYS FOR SUSTAINABLE BUSINESS GROWTH

**A**aarohana Corporate Solutions Pvt. Ltd. was established with a clear objective of integrating corporate, legal, financial and compliance services into a single professional platform. The firm supports businesses through every stage of growth by combining domain expertise with practical execution across regulatory, financial and strategic dimensions.

Founded in 2014 as a sole proprietorship, Aarohana emerged at a time when integrated corporate service models were still uncommon, particularly in Kerala and other parts of South India. From its early days as a focused professional practice, the firm has steadily evolved into a structured business consulting organisation with a multidisciplinary team and a pan-India presence, serving clients across diverse sectors, regulatory environments and stages of enterprisematurity.

Aarohana is registered in Kanpur, Uttar Pradesh, while its administrative and corporate operations are anchored in Kottayam, Kerala, which also serves as the hub for its South India operations. With operational offices in New Delhi and Kanpur, the firm services clients across varied regulatory jurisdictions and business ecosystems. This geographical spread enables Aarohana to deliver consistent service quality while adapting to regional compliance requirements, industry-specific regulations and sectoral nuances.

At the core of Aarohana's operations is its commitment to



being a single-point solution for businesses. The firm supports organisations across a wide spectrum of services including business registration, labour law compliance, corporate and secretarial compliance, taxation, accounting, auditing, and domestic business structuring. Over time, this service portfolio has expanded to include SME IPOs, Main Board IPOs, mergers and acquisitions, NBFC registration and compliance, private equity and venture capital funding support, SEBI compliances, banking compliance advisory, insurance broking firm support, research and analyst services, and start-up ecosystem facilitation. Regulatory compliance is not treated as a standalone function but as an integral part of business planning and execution. By aligning compliance with operational realities, Aarohana helps businesses remain legally secure while focusing on growth, capital access and expansion.

What distinguishes Aarohana is not merely the range of services it offers, but the way these services are delivered. The firm is equipped with in-house professionals including Company Secretaries, Advocates, Chartered Accountants, Cost Accountants

and domain specialists who work in close coordination. This professional ecosystem is further strengthened by the involvement of retired IPS and IRS officers, senior banking professionals, experienced HR leaders, MBAs and industry specialists. This integrated structure reduces dependency on multiple external advisors, minimises delays, and ensures that advice across disciplines remains consistent, practical and aligned with the client's objectives.

Aarohana's approach is rooted in the understanding that no two businesses are identical. Each organisation operates within its own constraints, ambitions and regulatory challenges. Accordingly, the firm adopts a customised, client-specific methodology rather than applying standardised templates. Its proactive engagement model ensures that compliance risks, financial gaps and governance challenges are anticipated and addressed early, enabling business owners to avoid disruptions and focus on their core activities.

Beyond core corporate and compliance services, Aarohana also facilitates product certifications, insolvency advisory, valuation services through registered insolvency consultants and registered valuers and allied professional services through independently rendered expert support. Over time, this comprehensive and dependable approach has resulted in strong client retention, with many businesses continuing their association with the firm over multiple years, funding cycles and phases of organisational growth.

The leadership of Aarohana plays a pivotal role in shaping its philosophy and operational discipline. The firm is led by Mrs. Reeba Varughese,

Managing Director, a Fellow Member of the Institute of Company Secretaries of India (ICSI). With over seventeen years of post-qualification experience and an overall professional exposure spanning more than twenty-five years, she brings deep expertise in legal, secretarial, accounting, taxation and corporate governance matters. A postgraduate in Commerce from Mahatma Gandhi University, her professional journey includes extensive work in trademark registrations, concurrent audits, internal audits, accounting and taxation advisory, and compliance management across diverse business segments.



Before establishing Aarohana, Mrs. Reeba Varughese served as Company Secretary at Geojit Financial Services Ltd., where she gained valuable experience in structured corporate governance, financial systems and regulatory frameworks within a large institutional environment. Her vision for Aarohana took shape much earlier, during her student years, when she identified the inefficiencies businesses faced in coordinating with multiple professionals and managing fragmented documentation. This insight laid the foundation for a firm that integrates services, systems and expertise into a cohesive operational model.

Complementing this leadership is Adv. Anil A. Thomas, a distinguished Advocate practicing before

the Supreme Court of India and an integral part of the Aarohana leadership ecosystem. He is also the spouse of Mrs. Reeba Varughese, Managing Director of the firm. With academic qualifications including a B.Sc., M.A., and LL.B. from Kanpur University, he brings a strong analytical and legal perspective to Aarohana. His experience in handling complex legal matters at the highest judicial level strengthens the firm's advisory capabilities, particularly in matters requiring advanced legal interpretation, litigation strategy and regulatory structuring. His presence reinforces Aarohana's ability to bridge practical compliance with legal robustness.

Operationally, Aarohana places strong emphasis on practicality and execution. The firm follows structured daily workflows, coordinated team processes and automated systems to ensure accuracy, timeliness and transparency. Continuous learning, regulatory updates and real-time adaptation are embedded into its work culture, enabling the team to respond effectively to evolving legal, financial and business landscapes.

Looking ahead, Aarohana has articulated a clear long-term vision. The firm plans to expand deeper into merchant banking services, including support for Initial Public Offerings (IPOs), mergers and acquisitions and capital market advisory. Its advisory arm, Aarohana Advisory, focuses on strategic domains such as marketing and insurance, while Aarohana Global Services is positioned to support overseas clients in managing their Indian operations, compliance and back-office services, as well as assisting Indian companies with overseas office setup and international expansion.

Rooted in Sanskrit, the name "Aarohana" reflects the firm's ethos. It conveys ascent, growth and upward movement, echoing the firm's purpose of helping businesses rise through structured guidance, compliance integrity and strategic foresight. Through its integrated model, experienced leadership and commitment to practical, execution-driven solutions, Aarohana Corporate Solutions Pvt. Ltd. continues to position itself as a trusted partner for businesses seeking stability, compliance and sustainable growth in a dynamic corporate environment.

# CORDON BUILDERS

## BUILDING HOMES, DELIVERING TRUST



Cordon Builders was established in March 2012 in Thiruvananthapuram with a clear intent to create well-planned residential developments that cater to both premium and affordable segments. The company was founded under the leadership of Shri. N Ayyappan Unnithan, with Shri. Arun Ayyappan Unnithan and Smt. Usha Unnithan serving as Directors. The administration and human resources functions of the company are overseen and managed by Mrs. Divya Viswanath, a postgraduate in Electrical Engineering.

*"FROM THE OUTSET, THE FOCUS WAS NOT RAPID EXPANSION, BUT STEADY AND RESPONSIBLE GROWTH ROOTED IN SOUND DESIGN, CONSTRUCTION QUALITY, AND PRACTICAL PRICING."*

Cordon Builders positioned itself as a value driven developer in a market often dominated by extremes. Its projects were designed to meet the needs of aspirational homeowners seeking refined living spaces that are dependable and affordable within the city limits. This balance between budget and quality standards has helped the company build a strong reputation in Thiruvananthapuram as a developer known for practicality, reliability and long-term liveability rather than short term appeal.

The company's strong foundation is rooted in the experience and leadership of its Chairman and Managing Director, Shri. N Ayyappan Unnithan, Founder Director of Cordial Company. With more than forty-three years of hands on involvement in construction and real estate, his leadership has shaped the company's approach to planning, execution and ethics. Over the years, under his stewardship, Cordon Builders has completed more than fifteen residential and commercial projects across Thiruvananthapuram. Each project reflects a disciplined construction process, structural reliability and a consistent emphasis on doing business transparently. Even as market conditions changed, the company maintained its commitment to quality without compromising on standards.



26 HUES OF LIFE



JANUARY 2026



As the company evolved, its leadership structure expanded in responsibility and scope. Arun Ayyappan Unnithan has played a central role in shaping the company's direction to the next extend. With over eighteen years of experience in the construction and real estate sector, his responsibilities span project planning, land acquisition, construction management, sales strategy and brand development. His engineering background provides a strong technical foundation, while his understanding of market trends enables him to align projects with changing lifestyle expectations and long-term value considerations.

Under his leadership, Cordon Builders has increased its focus on premium residential and commercial developments, particularly in high value and strategically important locations within Thiruvananthapuram. His approach views real estate not merely as construction activity, but as the creation of spaces that offer usability, comfort and value. Sustainability, thoughtful layouts, and durability form a central part of this outlook.

Arun Ayyappan Unnithan's involvement extends beyond the company. Between 2020 and 2022, he served as Vice Chairman of the Builders Association of India and currently holds the position of Vice President. He is also President of CREDAI Thiruvananthapuram, a member of the state committee, and part of the CREDAI Kerala General Council. Through these roles, he actively participates in discussions related to regulation, transparency, and responsible development, contributing to the broader real estate ecosystem in the state.

Beyond real estate, Arun is actively engaged in sports administration and community development in Kerala. He is a member of the Thiruvananthapuram District Sports Council, serves as the State Vice President of the Kerala Hockey Association, and holds the position of Vice President of the Olympic Association in Thiruvananthapuram district. He is also an active

Rotarian, a Founder Member of AWAKE Trivandrum, a member of the Trivandrum Chamber of Commerce and Industries, and a Patron Member of the Indian Red Cross Society. Collectively, these roles reflect his sustained commitment to community engagement, sports development, and institutional building beyond his business pursuits.

Cordon Builders' portfolio today reflects the cumulative effect of experience, continuity, and evolving leadership. The company is recognized for developing residential apartments and commercial spaces in some of the city's most sought after locations. Each project is approached with careful attention to planning, material quality, and execution. Timely delivery, clear communication, and strong post-handover support remain consistent strengths of Cordon, reinforcing buyer confidence and long-term trust. The company's relationship with homeowners continues well beyond the possession of apartments. Uniquely, Cordon becomes an integral and permanent member of the owners' association for each project, a practice that sets it apart within the industry. Through active participation and timely guidance, the firm ensures smooth operations and a hassle-free living experience for residents.

The strength of Cordon Builders lies in its continuity. The values established by the founding leadership continue to guide the company, while newer ideas and modern practices introduced by the next generation ensure relevance in a changing market. This balance allows the company to adapt without losing its identity.

Today, Cordon Builders is focused on building more than structures. Its work contributes to the urban landscape of Thiruvananthapuram by creating homes, workplaces and communities that are designed to last. With a stable leadership team, a growing portfolio, and a clear sense of direction, the company continues its journey with measured confidence, grounded in experience and guided by long term vision.



# DR JEEVAN JOSEPH METTAYIL

## AND THE DISCIPLINE OF BUILDING MODERN ENDOCRINE CARE

**T**oday, Dr Jeevan Joseph Mettayil stands at the centre of one of Kerala's most trusted super speciality practices in diabetes and endocrinology. As Director and Senior Consultant at Vimala Healthcare, he leads Jeevans Diabetes and Endocrine Centre, a dedicated unit designed to deliver comprehensive, individualised care for patients with complex metabolic and hormonal disorders. Under his leadership, Vimala Healthcare achieved NABH accreditation in 2024, a process that required meticulous planning, clinical governance and the creation of robust systems aligned with national quality benchmarks. The accreditation reflected not only institutional readiness but also a clearly defined clinical philosophy rooted in consistency, accountability and patient focused care.



In his current practice, Dr Jeevan is deeply involved in day to day clinical decision making while also shaping long term service development. He is known for a patient friendly approach that prioritises clarity, accessibility and continuity of care. Each treatment plan is tailored to the individual, recognising that endocrine disorders often require careful long-term engagement rather than episodic intervention. He has fully integrated digital tools into his practice, using telephone consultations, online follow ups and structured remote support to reduce barriers and improve adherence. This approach has made specialist care more accessible to patients across the region.

Beyond the clinic, he has emerged as a leading public educator in endocrine health. His educational videos on diabetes and hormonal disorders have gained wide reach, with several recordings crossing more than ten lakh views. These initiatives reflect his belief that informed patients are central to effective disease management and that modern physicians must engage beyond the consultation room.

Dr Jeevan's present standing is closely linked to a series of professional achievements that have shaped endocrine services in multiple institutions. Prior to establishing his centre at Vimala Healthcare, he established the Department of Endocrinology at Caritas Hospital, creating a structured speciality service that significantly expanded endocrine care at the institution. His contribution to clinical development and patient care at Caritas was recognised with the Best Doctor Award, reflecting both professional excellence and patient trust. The experience reinforced his focus on system building rather than individual prominence.

Dr Jeevan's professional achievements have been recognised through several credible honours. He received the Excellence Award from Kerala Kaumudi in recognition of his social and humanitarian activities, acknowledging his sustained engagement in community health initiatives and public service. He was also honoured with the Excellence Award from Janmabhoomi for his philanthropic contributions, particularly in the areas of healthcare outreach and public awareness.

An important dimension of his public service is his long association with Rotary. He has served as Past President of the Rotary Club of Kottayam and is currently Assistant Governor Elect of Rotary District 3211. Through Rotary, he has led and supported numerous charitable initiatives focused on healthcare access, education and community wellbeing. These activities form an integral part of his professional identity rather than an adjunct to it.

At the national level, Dr Jeevan continues to contribute to the advancement of his specialty. He currently serves as Vice President of the Association of Clinical Endocrinologists of India, participating in efforts to strengthen clinical standards, professional education and collaborative practice across the country. His role reflects the respect he commands among peers and his sustained engagement with the evolving needs of endocrine medicine.

The foundation for this work was laid through rigorous medical education and international training. Dr Jeevan completed his undergraduate medical studies at T D Medical College in Alleppey and his postgraduate degree in internal medicine at Sri Ramachandra Medical College in Chennai. Seeking advanced specialisation, he moved to the United Kingdom, where he underwent structured training in diabetes, endocrinology and general internal medicine within the NHS system. His years in the UK exposed him to high volume tertiary care, advanced investigative units and multidisciplinary clinical models.

During this period, he worked closely with leading figures in the field, including Professor Roy Taylor, Professor Philip Home and Dr Richard Quinton. These associations shaped his understanding of research driven practice, innovation in diabetes care and the importance of translating evidence into real world outcomes. His work in the UK combined clinical service with leadership roles in diabetes networks, education programmes and quality improvement initiatives.



He later extended his experience to the United Arab Emirates, adding further perspective through work in a different healthcare environment before returning to India. Across the UK, UAE and India, he developed an ability to adapt systems while maintaining consistent standards, a skill that now defines his leadership approach.

What continues to distinguish Dr Jeevan's career is his willingness to innovate while remaining grounded in evidence and ethics. He believes that meaningful progress in medicine requires stepping beyond established boundaries, testing new models and refining them through disciplined practice. This philosophy has guided his transition from clinician to institution builder and public educator. His popularity is rooted in trust earned through sustained care, clear communication and long-term patient relationships. As the head of a rapidly growing, NABH accredited super speciality diabetes and endocrine centre, he continues to shape contemporary endocrine practice through leadership, innovation and an enduring commitment to service.

# KANCARE

FOR EVERY FAMILY SEEKING A PLACE  
THAT REALLY CAN CARE



**A**s societies across the world confront rapidly ageing populations, families increasingly face a complex challenge. It is not always possible for working individuals to step away from their careers to care for elderly parents. Continuing to work is often essential not only for personal stability but also for sustaining society's productivity. At the same time, financial independence enables families to provide consistent, high quality care for their loved ones. KanCare exists at this crucial intersection, allowing families to remain professionally active while ensuring their parents receive compassionate, reliable and dignified care.



KanCare represents a thoughtful shift in how elder care is perceived and delivered. It is founded on the understanding that ageing is not an illness, but a natural phase of life that requires patience, empathy and meaningful companionship. For individuals living with memory loss, chronic illness, neurological conditions, limited mobility or emotional exhaustion, KanCare offers more than assistance. It offers reassurance, structure and a sense of belonging.

At the heart of KanCare's philosophy lies a deep respect for individual identity. Every resident carries a lifetime of experiences, relationships and personal history that are not diminished by age or illness. The care team approaches each individual with sensitivity to the life they have lived and the dignity they deserve. This belief shapes every aspect of care, from daily routines to clinical decisions. Care at KanCare is not transactional. It is relational, evolving through trust, attentiveness and understanding.

Residents receive comprehensive support through a multidisciplinary team that includes doctors, nurses, physiotherapists, dementia care specialists, neuro rehabilitation experts, palliative care professionals, trained caregivers and emotional support staff. This integrated approach ensures that physical, cognitive, emotional, social and spiritual needs are addressed together. Care plans are continuously reviewed and adapted, an essential practice when managing conditions such as dementia, Parkinson's disease, post stroke recovery, motor neuron disorders and terminal illnesses.

KanCare extends beyond conventional assisted living by offering a complete continuum of care.

Memory care, neuro rehabilitation, hospice services, palliative support and transition care following hospitalisation are delivered within environments designed to feel safe and familiar. Unlike the sterile settings often associated with institutional care, KanCare centres are intentionally warm and homelike. Its facilities in Kakkanad, Kalamassery and Elamakkara are designed with accessibility and safety in mind, without compromising comfort or privacy. Natural light, calming colours and discreet medical infrastructure help create spaces that feel nurturing rather than clinical.

Daily life at KanCare reflects careful attention to detail. Nutrition plans balance medical requirements with personal preferences. Activities are designed to encourage cognitive stimulation, emotional engagement and social interaction without overwhelming residents. Caregivers bring patience and calm to their work, offering reassurance through conversation, presence and consistency. Families take comfort in knowing that their parents are not merely supervised, but genuinely understood.

Personalisation remains central to KanCare's identity. No two residents are treated alike. Someone living with memory decline may require structure and familiarity, while a stroke survivor may need focused rehabilitation and encouragement. For individuals nearing the end of life, care centres on comfort, pain management and emotional support delivered with reverence for that stage of existence. KanCare responds with flexibility and compassion, ensuring that care is shaped by individual need rather than institutional routine.

KanCare's growth reflects this purpose driven approach. What began in 2018 as a small initiative operating from a rented house in Vennala evolved steadily through trust and lived experience. In 2022, KanCare moved into its own building in Kakkanad. Today, it operates three centres in Kochi, located in Kakkanad, Kalamassery and Elamakkara, while serving families from across Kerala, from Thiruvananthapuram to Kozhikode. Despite this expansion, KanCare has never positioned

itself as a purely commercial enterprise. Elder care, in its view, cannot be reduced to financial targets alone. Sustainability is defined by ethical practice, social responsibility and long term impact.

Looking ahead, KanCare envisions a broader ecosystem of compassionate elder care. Plans are underway to provide structured training and academic support to individuals interested in building similar centres. Through carefully chosen partnerships and franchise models, KanCare aims to expand while protecting the philosophy that defines its work. The long term goal is to establish a 500 bed KanCare network across Kerala, driven not by scale alone, but by alignment of values and vision.

### **Dr. Bobby Sarah Thomas: The Vision Behind KanCare**

KanCare's philosophy and direction are inseparable from the life and values of its founder, Dr. Bobby Sarah Thomas. A radiation oncologist by training, she began her medical journey at KMC Mangalore and later worked closely with communities that lacked access to comprehensive healthcare. Her return to Kochi during her mother's battle with cancer led her to further specialisation at Amrita Institute of Medical Sciences, where she developed a deep interest in preventive oncology and palliative care.

During these years, Dr. Bobby Sarah Thomas witnessed a recurring and deeply troubling reality. Patients were often sent home once curative treatment was no longer possible, leaving families overwhelmed and individuals isolated, without structured medical or emotional support. The gap between hospital care and dignified end of life support became impossible for her to ignore. These experiences shaped her conviction that care should not end when treatment does.

Determined to respond to this unmet need, she envisioned a model of care that prioritised comfort, dignity and quality of life alongside medical expertise. KanCare emerged from this vision, combining her clinical experience in oncology with a humane understanding of ageing, illness and emotional vulnerability. Through KanCare, she chose a path that values service over convenience and compassion over convention.

Today, KanCare stands as a reflection of that choice. It is an institution where medical knowledge and human presence coexist, where families find reassurance, and where ageing is treated not as decline, but as a stage of life deserving respect, care and dignity.



# THE GOLDEN CHARIOT

## A JOURNEY THROUGH SOUTH INDIA'S LIVING HERITAGE

There was a time when journeys were as enchanting as destinations, when the rhythm of wheels on rails carried more than travellers, carrying dreams, discovery and royal grace. The Golden Chariot, India's luxury tourist train, rekindles that bygone elegance with every voyage across the southern landscape. Like its name, it gleams with grandeur, moving through time and terrain in a way that feels both nostalgic and utterly unforgettable.

Operated by Indian Railways in association with the Karnataka State Tourism Development Corporation, the Golden Chariot offers a rare blend of regal heritage and modern indulgence. From the moment you step aboard, you are transported to an era where travel was an experience to be savoured. The soft glow of brass lamps, the polished teakwood interiors and the delicate motifs inspired by South India's royal dynasties create an ambience that is both intimate and opulent. Each coach is named after a dynasty that once shaped the region, including the Hoysalas, the Chalukyas and others, infusing history into every corridor and compartment.

The cabins are designed to evoke the luxury of royal chambers, yet fitted with every modern comfort. Plush beds, rich upholstery, en suite bathrooms, and panoramic windows invite you to unwind as the scenery shifts from city lights to the lush countryside. The meticulous attention to detail, whether in the intricate carvings on wooden panels or the soothing colour palette, reflects craftsmanship rooted in tradition yet attuned to contemporary taste. It is this balance between heritage and comfort that makes the Golden Chariot more than a train; it is a moving palace.

Beyond its design, what defines the Golden Chariot is its spirit of hospitality. The staff, trained to the highest standards of Indian Railways' luxury service, embody the warmth that India is known for. Every gesture, from the morning greeting with a smile to the impeccable dining service, adds to the sense of exclusivity and grace. It is a journey where guests are treated not merely as travellers but as honoured guests of a royal household.







The train runs on several carefully curated routes that capture the essence of South India's cultural and natural splendour. Among them, "Pride of Karnataka" and "Jewels of South" stand out as immersive journeys through time and geography. From Bengaluru, the train glides towards Mysuru, the city of palaces, where the grand Mysore Palace glows in golden light. Then comes the wilderness of Kabini, where dawn breaks over misty forests and herds of elephants roam free. Hampi, the UNESCO World Heritage site, unfolds next as a surreal landscape of ancient ruins and bouldered hills that echo with tales of the Vijayanagara Empire.



Another route carries travellers toward Goa, where sun-drenched beaches and colonial architecture offer a change of mood, creating a relaxed contrast to the grandeur of the inland kingdoms. Kerala brings a different kind of poetry as the Golden Chariot drifts along backwaters and spice-laden breezes. Tamil Nadu, with its temple towns and artistic heritage, adds depth and diversity to the journey, completing a mosaic of South India's spirit. Every stop offers guided excursions that reveal the cultural soul of each destination, turning sightseeing into storytelling.



Onboard, life is a celebration of refinement. The two fine-dining restaurants, Nalapaka and Ruchi, serve an array of regional and international cuisines prepared by skilled chefs. From delicate South Indian thalis to continental classics, each meal is a culinary journey in itself, accompanied by fine wines and the rhythmic motion of the train. The lounge bar, Madira, named after the Sanskrit word for wine, invites relaxed conversations over cocktails as the scenery glides past in a blur of green and gold.



For those seeking rejuvenation, the onboard spa offers traditional Ayurvedic therapies and modern wellness treatments, a rare indulgence on the move. A small gym, business centre and entertainment options ensure that comfort meets convenience throughout the voyage. Yet the real luxury lies not in the amenities but in the atmosphere, in the gentle chime of crystal, the hush of velvety corridors, and the ever-changing panorama outside the window.

The Golden Chariot is more than a train; it is an experience stitched with stories of royalty, art and adventure. It brings together the past and present in a seamless embrace, where every mile tells a tale and every moment feels timeless. In a world of fast travel and fleeting experiences, it reminds us of the joy of slow discovery, the kind that engages the senses and nourishes the spirit.

As the train returns to Bengaluru and the final whistle fades into the evening air, travellers carry home more than photographs. They take with them the memory of an India that lives and breathes through its landscapes and legends, where tradition and luxury coexist in perfect harmony. The Golden Chariot, in all its splendour, continues to roll forward as a symbol of that eternal charm, an ode to the golden age of travel and to the timeless beauty of South India.



# LA POSH

The Complete Luxury Interior Experience

TC 15/1412, AIR Road Vazhuthacaud, Trivandrum, Kerala PIN 695014

M. +91 9497 11111

Email: [interiors@thelaposh.com](mailto:interiors@thelaposh.com)



# CHINU MATHEW

## AND THE MAKING OF A NEW-AGE COMMUNITY HUB

**C**hinu Mathew has never been one to follow the expected path. Her story is one of courage shaped by purpose, a journey that moves from the calm precision of academia to the vibrant pulse of entrepreneurship. Today, as the Managing Director of Hangout Playworld Park and Hangout Street Food Hub, she has become a name that resonates with innovation, compassion and community spirit. Her ventures have grown into more than popular destinations; they are reflections of her belief that business should bring people together, spark creativity, and inspire confidence.

Long before she entered the world of entrepreneurship, Chinu was known for her dedication to teaching. With a BTech in Electronics and Communication Engineering and an MTech in Applied Electronics, she began her career as an Assistant Professor at the Karunya Institute of Technology in Coimbatore. Later, she continued shaping young engineers at St Joseph Engineering College in Pala, where she taught for a decade. Those years spent guiding students honed her sense of leadership and discipline, but they also awakened in her a quiet restlessness. She wanted to create spaces where learning would extend beyond classrooms, into everyday experiences that could transform lives.

That vision, however, was never hers alone. Her husband, Maju V Thomas, Chief Electrical Engineer at Gulf Drilling International in Doha, shares her drive for purposeful creation and meaningful impact. Together, they serve as the Managing Directors of Hangout Playworld Park and Hangout Street Food Hub, combining their complementary strengths to bring a shared dream to life. While Chinu focuses on nurturing experiences that build confidence and community, Maju's technical insight and steady leadership help anchor those ideas in practical, sustainable form. Their partnership has shaped Hangout into a place where imagination and precision coexist, a true reflection of their united vision and enduring teamwork.





Hangout Playworld Park was imagined not simply as a playground but as a place where children discover confidence through art, performance and self-expression. Each applause and every small success is cultivated as a lesson in courage. Beside the park stands Hangout Street Food Hub, the biggest street food hub in Kerala and the first street food and nightlife hub in Kottayam. With 15 bustling food counters serving flavours from Kerala and beyond, it offers an experience that comes alive from 2 PM to 2 AM every day. The hub continues to grow, with new and diverse food brands being added regularly, creating a dynamic culinary destination that celebrates variety and community. It is a lively space where food, music and laughter merge, turning ordinary evenings into shared moments of joy. Together, these ventures have reshaped leisure in their community, blending fun with purpose and a strong sense of belonging.

Chinu's influence extends well beyond her own enterprises. She has been an active force in the Women Entrepreneur Network in Kottayam, first as Vice Chair from 2022 to 2024 and later as Chair for the following term. Now serving as an Advisory Member, she continues to mentor women who are building their own dreams. Her work has earned her the Social Justice Forum Award for Women Excellence and the Mahila Ratna Award, honours that recognise her not only as a successful entrepreneur but also as a leader deeply committed to empowering others.

Her journey has not been without challenges. Moving from the structured life of teaching to the unpredictable world of business demanded both vision and resilience. Yet Chinu's strength lies in her ability to see possibilities where others might hesitate. She listens, observes, and responds with ideas that bridge gaps in everyday life, creating safe spaces for children to grow and warm, welcoming spaces for families to connect. Her leadership is rooted in empathy and her success flows from a genuine understanding of people.

Looking ahead, Chinu envisions taking Hangout to the next level as a holistic lifestyle destination that nurtures both wellness and creativity. With fitness zones and a beauty parlour already part of the experience, the next phase focuses on introducing wellness programs along with interactive activities designed to inspire vitality, joy and togetherness.

Chinu Mathew's journey is a story of quiet determination of a woman who stepped beyond her comfort zone to create meaning in the lives of others. Her achievements remind us that leadership is not about authority, but about inspiration. In her hands, entrepreneurship becomes more than business; it becomes a way to bring people together, to spark confidence and to leave a lasting imprint of kindness and progress.

# STEM ROBOTICS ACADEMY INTERNATIONAL

## PIONEERING THE FUTURE OF ROBOTICS AND AI EDUCATION



**RAJ SIR'S**  
**STEM ROBOTICS**  
**INTERNATIONAL**

**W**ith the technology advancing at a rate like never before in this age, STEM education is essential to get students and professionals ready for tomorrow's challenges. STEM Robotics Academy International is at the forefront of this revolution, preparing learners with state-of-the-art skills in Coding, Robotics, Artificial Intelligence (AI), and Internet of Things (IoT).

The academy, established by Rajasekharan A. H, a visionary in robotics education and international training solutions, in collaboration with global institutions, has trained and nurtured students to meet international standards. With over 20 years of experience in STEM fields, 12 years in the embedded industry, and 8 years of specialized training in Coding, Robotics, and Artificial Intelligence, Rajasekharan has positioned the academy as a powerhouse of futuristic education. The institution has trained over one lakh students in association with more than 100 institutions, offering innovative courses. The achievements and acclaims of the institute have been featured in top publications like The Times of India, The Indian Express, CEO Magazine, and BizMedia. Its profile and curriculum have received official approval from HRDF Malaysia and the Ministry of Education, Singapore. The academy's programs are globally accredited and accepted; thus, the students are awarded a globally accepted certification, which provides them with a competitive advantage in the job market.

Unlike conventional theoretical instruction, STEM Robotics Academy International focuses on application-based learning and hands-on practice. Its curriculum ranges across several levels and covers school students, graduates, and working professionals. The academy provides schools with robotics labs, diploma and postgraduate studies in AI and IoT, as well as faculty development training to ensure teachers are equipped to train future technology leaders.

At the core of its innovation is SARA (STEM Advanced Robot for Academics), a prize-winning educational robot that makes learning robotics interactive and fun. Awarded the "Best Robot to Teach Robotics" at the International Robotics Conference in the Philippines, and having represented India in the same conference across 2019, 2020, 2021, and 2023, SARA allows students to learn problem-solving, analytical, and technical skills in an experiential setting.





### **Expanding STEM Education Beyond Classrooms**

STEM Robotics Academy International transcends traditional teaching by establishing tinkering labs within schools, in which students are allowed to tinker with AI and robotics technology. The labs provide imaginative spaces for prototyping, experimentation, and innovation, creating experiential learning opportunities and paving the way for students to have careers in technology in the future.

Besides, the academy also helps institutions develop robotics clubs where students take part in projects, competitions, and mentorship opportunities with professionals from industry. Its worldwide workshops and STEM conferences complement the sharing of knowledge by bringing students in contact with top professionals working in the industry.

### **Closing the Gap Between Industry and Academia**

Aside from education, the academy is actively engaged in high-end robotic applications, AI chatbot solutions, and Customised Robotic Solutions through its subsidiary, SRAI Smart Solutions Pvt Ltd. In addition, Rajasekharan A. H, being Co-founder of SRAI Smart Solutions Pvt Ltd, has been actively involved in robotic automation, bridging the industry-need gap with academic learning.

### **Enabling the Future Generation of Tech Innovators**

With a combined experience of over 20 years in STEM education, STEM Robotics Academy International stands out as the frontrunner in driving students into the future of AI. Through the fusion of research, innovation, and industry partnership, the academy is rewriting the playbook on robotics education and building a world where STEM education goes beyond the classroom, it's a transformative, career-defining journey.





# JOHNS THOMAS

## THE LEADERSHIP BEHIND KERALA'S EMERGING BAKING BRAND

**T**he workday at Mr Johns Baking Co in Kottayam follows a clear and methodical routine, and the discipline behind it begins with Johns Thomas.

He starts each morning by reviewing the day's production requirements and ensuring that his team is aligned on the tasks for the day. Equipment checks, ingredient measurements and sanitation procedures move in a structured sequence he has refined through consistent practice. Johns oversees these activities with precise attention, making sure every stage meets the operational standards he expects from his team. The environment reflects not only the efficiency of the brand but also the personal discipline, focus and consistency that define Johnson's leadership.

Johns entered the baking sector with a clear and strategic understanding of what truly sustains long-term growth. He recognised early that a business is not built on occasional walk-ins, but on the consistent loyalty of customers who return because they trust the brand. When opened the first outlet in Kottayam five years ago, he anchored every decision on that principle. He prioritised credibility, consistency

and accountability from the first day of operations. The result is evident: many of the customers who walked in during those initial months still return today, demonstrating that his focus on dependable quality was not only strategic but decisively effective.

From the outset he adopted a strict position on quality. Preservatives and short term shortcuts had no place in his system. He believed that products should stand on the strength of their ingredients, and he committed to using only high standard raw materials even when they demanded greater care in production. His assessment was straightforward. When customers experience consistent and genuine quality, they recognise the value of the product. This approach helped Mr Johns Baking Co build a reputation grounded in transparency, trust and product integrity rather than promotional claims.

The financial and operational aspects of the business reflect similar clarity. Johns manages risk through planning rather than reaction. Seasonal variations are mapped carefully and production is adjusted without altering quality. The Christmas season, a major period for cake orders, demonstrates this





approach clearly. Ingredients for plum cakes are sourced in January. Mixing begins by February. The product develops gradually through the year and reaches its final form in November. This extended timeline preserves the distinct character of the cake and maintains consistency for customers who expect the same result every year.

During periods of lower demand he reduces production quantity but not quality. This prevents wastage and supports stable operations. The

discipline in planning also benefits the workforce. Johns regards staff welfare as an essential part of business stability and he ensures additional leaves during off seasons so they can relax before the busy season's arrival. Many of his staff members have remained with him since the beginning, which signals the internal health of the workplace.

Johns also reflects critically on the wider industry. He notes that many young bakers from his cohort chose to work abroad, while he made the decision to build his enterprise within India. He believes that the sector requires entrepreneurs who remain invested locally and who strengthen

competition through quality rather than speed. For him, competition is constructive when one producer raises standards and others respond by improving further. This, in his view, forms the basis of genuine progress in the field.

Mr Johns Baking Co now operates two outlets, the newest in Pambadi. Each outlet receives updated menus and newly developed items so that the brand continues to evolve in line with changing customer expectations. The introduction of sugar free items has broadened the product range, and Johns is preparing to incorporate alternative sweeteners even for fresh cream cakes from the next Christmas season onward. Cakes made entirely from wheat flour are now available alongside the conventional versions. High fibre bread has been added in response to increasing demand for healthier products.

The brand's ability to stand alongside competitors that have operated for more than five decades comes from its disciplined model rather than aggressive expansion. Johns has never relied on elaborate strategies. He relies on consistent production, strict quality control and a steady relationship with customers. These values guide every decision and have shaped the identity of the company.

Looking ahead, Johns sees an industry that is shifting toward greater transparency in production and more responsible ingredient choices. He believes that businesses that align with these expectations will define the next stage of the food sector in Kerala. His goal remains clear. He aims to strengthen the brand through sustained quality, careful growth and a readiness to adopt new methods when they serve the customer. In a market where trends change quickly, his measured and disciplined approach positions Mr Johns Baking Co as a brand built for long term relevance.





# THE HONEST PAPPAD

## THAT RESTORES TRUST TO THE TABLE

In many Malayali homes the simple pappadam (pappad) has long been a familiar presence. Yet people often accept poor quality because a truly reliable product is difficult to find. This gap sparked the vision of entrepreneur Bijumon P. K whose search for a better pappad led to the creation of Sabari Export Pappad, produced by Paanans Enterprise at Puthencruze in Ernakulam. His idea was straightforward but ambitious. He wanted to give families a clean natural and trustworthy option in a category that had quietly slipped into compromise.

The everyday pappad sold across Kerala has been facing problems for years. Rising prices of raw materials have pushed many producers to take shortcuts that weaken both safety and taste. Urad dal which is the heart of a traditional pappad is often replaced in large part with cheaper powders. Many products are not dried well and therefore develop fungus in just a few days even though they remain in use for weeks. Some makers have even switched standard ingredients for cheaper substitutes that are unsafe. When such a pappad reaches the frying



pan it drinks oil quickly and in a market flooded with adulterated oils this becomes an even greater threat to health.

Sabari Export Pappad was created as a clear answer to these concerns. The brand uses only high grade urad dal which is purchased as whole grains and ground fresh. No added powders are used to dilute quality. The pappad is dried with great care until it reaches a deep dry state that protects it from fungus for several months as long as it is stored away from moisture. There is no place for harmful chemicals or unstable substitutes in the production process.

The deep dry method also changes the way the product behaves in the kitchen. When fried it hardly absorbs oil which means the taste stays clean and the body is spared the burden of unnecessary fat. It is a small but meaningful improvement that brings confidence back to a food that is eaten daily in many families.

The story of Sabari Export Pappad is essentially the story of doing things right. It shows what can happen when a simple product is made with honesty patience and respect for health. Every packet reflects the values that shaped the brand from the beginning. It stands for purity natural quality and the assurance that tradition can be protected without any compromise.

This is why Sabari Export Pappad has earned its place as a truly natural premium and healthy choice for anyone who wants to enjoy the comfort of pappadam with complete peace of mind.



MULLASSERY  
PAPER BAGS



Your brand's perfect

## Packaging Partner

We are your trusted packaging partner, turning every bag into a brand statement!

+91 994 600 01 55

[www.mullassery.in](http://www.mullassery.in)

# Mullassery

Paper Bags

**CAST A LINE.  
CATCH A SMILE.**

Hang out in the idyllic backwaters of God's Own Country. Reconnect with absolute joy and peace. And rediscover that magical sense of togetherness.

# Come Together in Kerala



God's Own Country  
keralatourism.org



WhatsApp 'Maya'  
and explore Kerala

stark.in