

# HUES OF LIFE

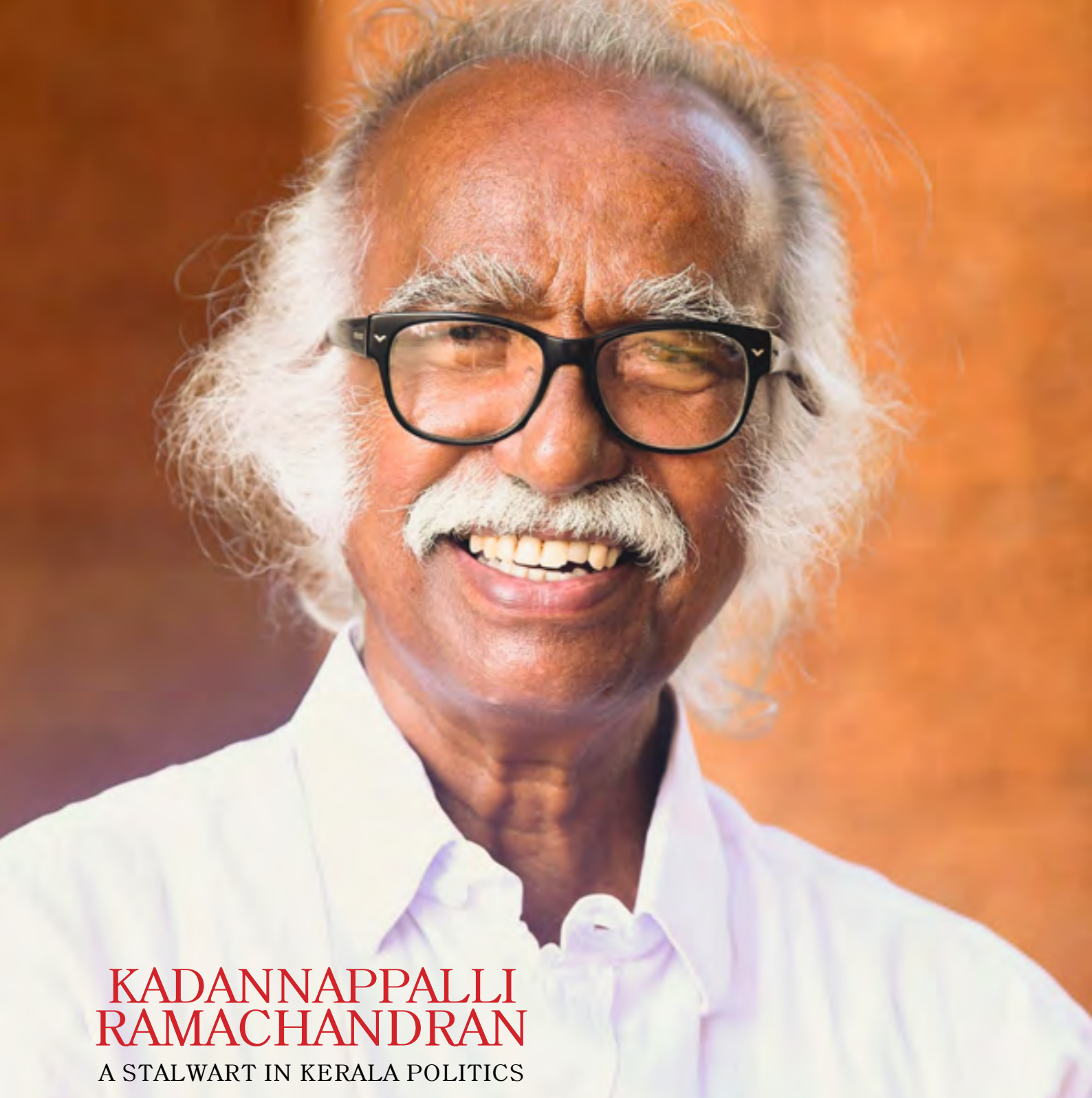
ENGLISH, MONTHLY

Vol. No. 03

Issue No. 11

JUNE 2024

Price Rs. 100/-



**KADANNAPALLI  
RAMACHANDRAN**

A STALWART IN KERALA POLITICS

**CELEBRATING HERITAGE AND KNOWLEDGE**

INTERNATIONAL MUSEUM DAY 2024 AT KERALA MUSEUM



# DIGITAL PARTNER



Blockchain Based Loyalty | Digital marketing | Website Development  
Mobile Application Development | E Commerce Portal

INDIA UAE USA

[www.mysearchglobalrewards.com](http://www.mysearchglobalrewards.com)

IND: +91 989 547 8037 | UAE: +971 561 202 055



FUEL YOUR BELLY WITH

# Happiness

DIMSUM RESTAURANT

☎ 062827 26887

✉ [bigbellymimos@gmail.com](mailto:bigbellymimos@gmail.com)

Kowdiar  
Trivandrum, Kerala

Pattoor  
Trivandrum, Kerala

Panavila  
Trivandrum, Kerala

AZAD 1940

Star

Simply Good.

# CELEBRATE TRAVANCORE CUISINE.



Azad Star celebrates one of India's authentic cuisines from its southern tip. Azad Star celebrates Travancore Cuisine with a host of other popular delicacies from across the world. Azad Star is showcasing Travancore Cuisine to be a part of Indian cuisine on the cuisine map of the world. Azad Star will conquer your heart with its 'Simply Good' philosophy.

- MALL OF TRAVANCORE, TRIVANDRUM ☎ 75111 11940
  - VAZHUTHACAUD, TRIVANDRUM ☎ 0471 233 6337
- Hues of Life



# കേരളം നൂതനപാതയിൽ, കെ-ഡിസ്കിനൊപ്പം



കേരള ഡെവലപ്മെന്റ് ആൻഡ് ഇന്നൊവേഷൻ സ്ട്രാറ്റജിക് കൗൺസിലിന്റെ (K-DISC) KGDC, YIP, OLOI, KKEM, EV Consortium, ET, Manchadi, Mazhavillu തുടങ്ങിയ പദ്ധതികൾ കേരളത്തിലെ വികസനത്തിന് വഴിയൊരുക്കുന്നു.

### കേരള ജീനോം ഡാറ്റാ സെന്റർ (KGDC)

അന്താരാഷ്ട്ര തലത്തിൽ നിലനിൽക്കുന്ന മാതൃകകൾക്ക് അനുസൃതമായി ജീനോമിക് ഡാറ്റാ ക്ലസ്റ്റററ്റ് ചെയ്യുന്നതിനും പ്രസിദ്ധീകരിക്കുന്നതിനും.

### യങ് ഇനവേഷ്യേഴ്സ് പ്രോഗ്രാം (YIP)

സ്കൂൾ, കോളേജ്, ഗവേഷണ വിദ്യാർത്ഥികളിൽ നൂതന ആശയ രൂപീകരണം പ്രോത്സാഹിപ്പിച്ച് നാടിന്റെ യഥാർത്ഥ ജീവിത പ്രശ്നങ്ങൾക്ക് പരിഹാരം തേടുന്നു.

### കേരള നോളജ് ഇക്കണോമി മിഷൻ (KKEM)

കേരളത്തിലെ അഭ്യസ്തവിദ്യരായ തൊഴിൽരഹിതർക്ക് വിവിധ മേഖലകളിൽ തൊഴിലവസരങ്ങൾ സൃഷ്ടിക്കാനുള്ള ബഹുതരമായ പദ്ധതി.

### ഇലക്ട്രിക് വെഹിക്കിൾസ് കൺസോർഷ്യം (EV Consortium)

വൈദ്യുത വാഹനങ്ങളുമായി ബന്ധപ്പെട്ട ഉപസംവിധാനങ്ങളും ഘടകങ്ങളും നിർമ്മിക്കുന്നതിനുള്ള ഒരു ആവാസവ്യവസ്ഥയിലേക്ക് കേരളത്തെ പരിവർത്തനം ചെയ്യാനുള്ള കെ-ഡിസ്കിന്റെ നേതൃത്വത്തിലുള്ള കൺസോർഷ്യം.

### എലൈംഗിംഗ് ടെക്നോളജീസ് ഇൻ ഗവണ്മെന്റ് (ET)

നൂതന സാങ്കേതികവിദ്യകൾ ഉപയോഗിച്ച് സർക്കാർ വകുപ്പുകളുടെ സേവനങ്ങൾ മെച്ചപ്പെടുത്തുന്നു.

### മഞ്ചാടി 'ടീച്ച് ഓഫീസ് ഫോർ കേരള' (Manchadi)

മൂന്നാം ക്ലാസ്സുമുതൽ എഴാം ക്ലാസ്സുവരെയുള്ള കുട്ടികളിൽ ഗണിതത്തിലുള്ള പ്രാവീണ്യം മെച്ചപ്പെടുത്തുന്നതിനായി വ്യത്യസ്തമായ തീരീതിൽ ഗണിത അഭിരുചികൾ വളർത്തിയെടുക്കാനുള്ള ശ്രമമാണ് മഞ്ചാടി.

### മഴവില്ല് 'ടീച്ച് സയൻസ് ഫോർ കേരള' (Mazhavillu)

മൂന്നാം ക്ലാസ്സുമുതൽ എഴാം ക്ലാസ്സുവരെയുള്ള കുട്ടികളിൽ സംയോജിത ശാസ്ത്ര പഠനം എന്ന ആശയത്തെ മുൻനിർത്തി പ്രായോഗിക പ്രവർത്തനങ്ങളിലൂടെയും വിശകലനത്തിലൂടെയും ശാസ്ത്ര ബോധം വർദ്ധിപ്പിക്കുന്നതിന് ഊന്നൽ നൽകിക്കൊണ്ട് പ്രാവർത്തികമാവുന്ന നൂതന ആശയമാണ് മഴവില്ല്.



KKEM ലെ DWMS ഹാർട്ടിൽ അവിടെ അപ്ലോഡ് ന്നുകൾ ചെയ്യൂ



YIP ഇൽ പഠനവ്യാപാരങ്ങൾ ന്നുകൾ ചെയ്യൂ



# Contents

08

**CELEBRATING HERITAGE AND KNOWLEDGE**



12

**KADANNAPPALLI RAMACHANDRAN  
A STALWART IN KERALA POLITICS**



14

**INTERNATIONAL MUSEUM DAY  
CELEBRATING CULTURAL HERITAGE AND EDUCATION**

16

**ANNUAL STRATEGY MEET  
2024-25 NATIONAL SMALL INDUSTRIES CORPORATION**

18

**THE DUAL EDGE OF AI  
EMPOWERING INNOVATION  
AND ETHICAL CONUNDRUMS**



22

**DEMYSTIFYING CANCER  
A JOURNEY TOWARDS CLARITY  
AND AWARENESS**

28

**FOOD POISONING CASES IN  
KERALA FOOD SAFETY POLICY  
AND THE NEED FOR INCREASED  
GOVERNMENT ATTENTION**

30

**MANDAKINI  
A BEAUTIFUL STORY OF LOVE  
AND LAUGHTER**

32

**KERALA'S SCHOOL REOPENING  
A BEACON OF HOPE AND  
ECONOMIC REVIVAL**

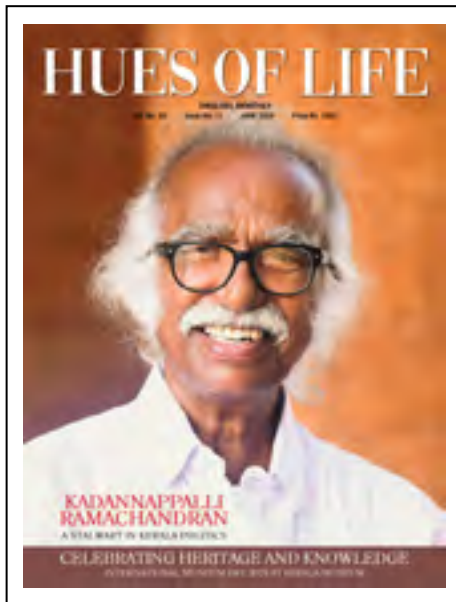
36

**YELAGIRI  
A SERENE HILL STATION  
IN TAMIL NADU**

# HUES OF LIFE

Vol. No. 03 Issue No. 11 JUNE 2024

Editor & Publisher: **Nijith Raj**  
Executive Director: **Sajitha Beegum**  
Editorial Assistant: **Maneesh T.M.**  
Art Director: **Kiran Mohan**  
Creative Head: **Naveen A**  
General Manager: **Jayaprakash**  
Photographer: **Abhijith B.**  
Correspondent: **Priya Gomez**  
Manager- Marketing: **Feni Felix**



Enquires: **feifeibs247@gmail.com**  
**+91 623 84 899 86**

## editor's Desk

*Dear Readers,*

As we embrace the warmth and vibrancy of June, Hues of Life brings you an issue rich with diverse and compelling topics. In our feature article, we delve into the pressing concerns surrounding AI threats, exploring the balance between innovation and caution in a rapidly advancing technological world. Additionally, we offer an insightful review of "Mandakini," a much-anticipated Malayalam movie, dissecting its narrative and cinematic techniques. With the joyous season of school reopening upon us, we provide practical tips and insights to help students and parents transition smoothly into the new academic year.

In celebration of International Museum Day, we highlight the importance of museums in preserving cultural heritage and educating the public, showcasing some of the most remarkable museums around the globe. Our health and wellness section addresses common cancer myths, debunking misconceptions with scientifically-backed facts. For the travel enthusiasts, our travelogue takes you to the serene hill station of Yelagiri, offering vivid descriptions and travel tips for a perfect summer getaway.

Food safety is of paramount importance, and we emphasize this with an article outlining best practices to ensure the food we consume is safe and nutritious. This June issue of Hues of Life is a celebration of knowledge, culture, and wellness. We hope these stories resonate with you, providing both entertainment and enlightenment. Thank you for your continued readership, and we look forward to embarking on this journey of discovery together.

Warm regards,

Nijith Raj  
Editor & CEO  
editor@huesoflife.online  
www.huesoflife.online

Printed & Published by NIJITH RAJ on behalf of FEFE INTELLIGENT BUSINESS SOLUTIONS and Printed at SB PRESS PRIVATE LIMITED., College Road, Statue, Thiruvananthapuram, Kerala-695001 and Published at 24/606, JAYANI, Valiyakunnu, Kizhavalam.P.O., Kizhuvalam-Koonathalloor Road, Thiruvananthapuram, Kerala-695104 .

Editor: NIJITH RAJ.

Volume 03 Issue 11 of Monthly Magazine "HUES OF LIFE" printed on JUNE 2024. No of Pages - 44 Price - INR 100

RNI REFERENCE NO 1358516 | TITLE CODE KERENG02661



# CELEBRATING HERITAGE AND KNOWLEDGE

INTERNATIONAL MUSEUM DAY 2024 AT KERALA MUSEUM



**T**he International Museum Day 2024, celebrated under the auspices of the Kerala Museum, was a resounding success, capturing the essence of this year's theme: "Museums for Education and Research." Held on May 18th, the event was a vibrant confluence of culture, history, and education, symbolizing the profound role museums play in society as repositories of knowledge and custodians of our collective heritage.

### **A Grand Inauguration**

The evening commenced with an illustrious inauguration ceremony. Sri. Kadannappalli Ramachandran, the honourable Minister of Registration, Museums, Archaeology, and Archives, officially opened the event by unveiling the exhibition on Knowledge Street. His presence, alongside distinguished guests such as Mrs. Mini Antony IAS, Secretary of the Cultural Department,

and Adv. VK Prasanth, MLA of Vattiyoorkavu, set a dignified tone for the proceedings. The dignitaries toured the special exhibition at the historic Napier Museum, marvelling at the curated displays that chronicled Kerala's rich heritage.

### **Engaging the Public: Day-Long Celebrations**

From 10 am to 8:30 pm, heritage enthusiasts and the general public thronged the Kerala History and Heritage Museum, participating in a plethora of activities designed to educate and entertain. The day's programs emphasized the role of museums in education and research, providing a platform for intellectual engagement and cultural exchange.

The seminar series was a cornerstone of the celebrations. Sri. Chandran Pillai, Executive Director of Kerala Museum, led the first session, discussing "Museums as an Educational Institution." This was followed by an insightful seminar on "Museums for Educational Research," presented by Bipin Balachandran, an esteemed art historian and curator. These sessions attracted students from the PG Diploma in Journalism at Keltron and history students from Women's College, Neeramankara, fostering a rich dialogue on the educational potential of museums.

### **Interactive Learning and Cultural Performances**

Mrs. Uma Maheswari, a noted historian, conducted an open quiz that engaged the public, challenging their knowledge of history and heritage. The gallery walk, led by Ganesh V. Sivaswamy, Honorary Curator of the Raja Ravi Varma Art Gallery, was a major highlight, offering visitors a deeper appreciation of the iconic artworks on display.

Cultural performances added a vibrant touch to the celebrations. Folk songs, Parunthattam, and Kummatikkali, performed by the Thudi Folks Band from Idukki, enchanted the audience, showcasing the rich tapestry of Kerala's folk traditions.



### Heritage Exhibitions: A Journey Through Time

The Kerala Museum curated special exhibitions that transported visitors to a bygone era. Exhibits featured traditional toys and playgrounds made from coconut leaves and nuts, a nostalgic reminder of simpler times. Demonstrations of cane and wild vine weaving and a pottery exhibition highlighted the craftsmanship that once adorned Malayali kitchens with earthy, handmade pots.

One of the most captivating exhibits was the display of weapons used in Kalaripayattu, Kerala's ancient martial art. This exhibit offered a rare glimpse into the martial heritage of the region, fostering a deeper connection with our ancestral traditions. Alongside these visual delights, visitors also had the opportunity to savour heritage food, adding a sensory dimension to their museum experience.



### Reflecting Our Identity

The "Kannadi" Museum Day Celebration Program was more than just an event; it reflected our identity and heritage. Museums, as mirrored in the theme, serve as educational and research institutions, vital in preserving the true history of mankind against the tide of vested interests. They are the beacons that cut through the clouds of ignorance, shining light on the vast ocean of human culture.



As we celebrate International Museum Day 2024, Kerala Museum stands as a proof to the power of museums to educate, inspire, and connect us with our past. The event not only highlighted the museum's role in education and research but also reinforced its position as a cultural cornerstone in our society. The celebrations left an indelible mark on all who attended, igniting a renewed passion for heritage and a deeper appreciation for the rich heritage of human history.

# എന്നിലെ മാറ്റങ്ങളെ ഞാൻ അറിയും



## NIMS EXECUTIVE CHECK-UPS

### FULL BODY EXECUTIVE CHECK-UP ₹8000

COMPLETE HAEMOGRAM, FBS/PPBS/HbA1c, LIPID PROFILE, RENAL PROFILE, LIVER PROFILE, ELECTROLYTES, THYROID PROFILE, BLOOD GROUPING & RH FACTOR, PERIPHERAL SMEAR, C-REACTIVE PROTEIN (CRP), CREATINE PHOSPHOKINASE (CPK), RHEUMATOID FACTOR (RH FACTOR), VITAMIN D LEVELS, S. CALCIUM, MAGNESIUM, PHOSPHORUS, PAP SMEAR (FEMALE), PROSTATE - SPECIFIC ANTIGEN (PSA - MALE), URINE ROUTINE EXAMINATION, URINE MICRO ALBUMIN, DENTAL SCALING, DENTAL X-RAY, AUDIOGRAM, ECG, CHEST X-RAY, ECHO, TREADMILL TEST (TMT), PULMONARY FUNCTION TEST (PFT), USG ABDOMEN, CHIROPRACTOR

#### CONSULTATIONS:

GENERAL MEDICINE, CARDIOLOGY, NEPHROLOGY, GASTROENTEROLOGY, OPHTHALMOLOGY, DENTISTRY, DIETARY ADVICE, PHYSIOTHERAPY

\*Complimentary Breakfast & Lunch

### BASIC EXECUTIVE CHECK-UP ₹1250

COMPLETE HAEMOGRAM, FBS/PPBS/HbA1c, TOTAL CHOLESTEROL, RENAL PROFILE, LIVER PROFILE, ELECTROLYTES, TSH, BLOOD GROUPING & RH FACTOR, URINE ROUTINE EXAMINATION, ECG, CHEST X-RAY/USG ABDOMEN

#### CONSULTATIONS:

GENERAL MEDICINE, DIETARY ADVICE

\*Complimentary Breakfast

### CARDIAC EXECUTIVE CHECK-UP ₹3500

COMPLETE HAEMOGRAM, FBS/PPBS/HbA1c, LIPID PROFILE, RENAL PROFILE, ELECTROLYTES, TSH, ECG, CHEST X-RAY, ECHO, TMT (TREADMILL TEST), AUDIOGRAM

#### CONSULTATIONS:

CARDIOLOGY, DIETARY ADVICE

\*Complimentary Breakfast & Lunch

### NORMAL EXECUTIVE CHECK-UP ₹3000

COMPLETE HAEMOGRAM, FBS/PPBS/HbA1c, LIPID PROFILE, RENAL PROFILE, LIVER PROFILE, ELECTROLYTES, TSH, BLOOD GROUPING & RH FACTOR, PAP SMEAR (FEMALE), PSA (PROSTATE-SPECIFIC ANTIGEN - MALE), URINE ROUTINE EXAMINATION, AUDIOGRAM, ECG, CHEST X-RAY, USG ABDOMEN

#### CONSULTATIONS:

GENERAL MEDICINE, GYNAECOLOGY/ UROLOGY, DIETARY ADVICE

\*Complimentary Breakfast & Lunch

### POST COVID EXECUTIVE CHECK-UP ₹6000

COMPLETE HAEMOGRAM, FBS/PPBS/HbA1c, RENAL PROFILE, LIVER PROFILE, PROTEIN PROFILE, ELECTROLYTES, D DIMER, C-REACTIVE PROTEIN (CRP), COVID IGG, ECG, CHEST X-RAY, ECHO, TREADMILL TEST (TMT), 6 MINTS WALK TEST, PULMONARY FUNCTION TEST (PFT), PHYSIOTHERAPY - PULMONARY REHABILITATION

#### CONSULTATIONS:

PULMONOLOGY, CARDIOLOGY, NEUROLOGY, PSYCHOLOGY, DIETARY ADVICE, NATUROPATHY

\*Complimentary Breakfast & Lunch

### WELL WOMEN EXECUTIVE CHECK-UP ₹6000

COMPLETE HAEMOGRAM, FBS/PPBS/HbA1c, LIPID PROFILE, RENAL PROFILE, LIVER PROFILE, ELECTROLYTES, TSH, CARCINO EMBRYONIC ANTIGEN (CEA) TEST, RHEUMATOID FACTOR (RH FACTOR), VITAMIN D LEVELS, S. CALCIUM, PAP SMEAR, URINE ROUTINE EXAMINATION, AUDIOGRAM, ECG, CHEST X-RAY, USG ABDOMEN

#### CONSULTATIONS:

GYNAECOLOGY, OPHTHALMOLOGY, ENDOCRINOLOGY, RHEUMATOLOGY, UROLOGY, DIETARY ADVICE, PHYSIOTHERAPY

\*Complimentary Breakfast & Lunch



*NIMS Family Wishes You a Happy and Healthy Year Ahead!*

**FOR MORE DETAILS, CONTACT: 8075 026 226**

ISO 9001-2015 Certified Hospital



NIMS MEDICITY, Neyyattinkara, Trivandrum, E-mail: [Info@nimshospital.com](mailto:Info@nimshospital.com), Website: [www.nimshospital.com](http://www.nimshospital.com), NIMS FOUNDATION

CASHLESS-ECHS/ESI/VSSC/BSNL/KASP/STAR HEALTH ETC...



# KADANNAPPALLI RAMACHANDRAN

A STALWART IN KERALA POLITICS

**K**adannappalli Ramachandran is a notable figure in the political scene of Kerala, India. Known for his dedication to public service and his deep connection with the grassroots, Ramachandran has made significant contributions to the state's development and political discourse. His career spans various roles, including that of a legislator, minister, and party leader, demonstrating his versatility and commitment to his constituents.

Born in Kannur district, a region known for its political activism and cultural heritage, his early life was marked by a keen interest in social issues and a desire to bring about positive change in society. This early inclination towards social service paved the way for his entry into politics.

His political journey began with his active involvement in student politics. He was a member of the Kerala Students Union (KSU), the student wing of the Indian National Congress. His leadership qualities and dedication quickly brought him into the limelight, and he transitioned into mainstream politics with ease.

He became a prominent leader within the Congress party and later joined the Janata Dal (Secular) (JD(S)), reflecting his adaptable political stance aimed at better serving his people. His electoral success began with his election to the Kerala Legislative Assembly. Over the years, he has been elected multiple times, representing his constituency with distinction.

He has held several key ministerial portfolios in the Kerala government. He is currently serving as the Minister for Ports, Museums, Archaeology, and Archives, a role that underscores his commitment to both infrastructural development and cultural preservation.

As the Minister for Museum, Archaeology, Archives and Ports in the second Pinarayi Vijayan Government, Kadannappally Ramachandran has overseen significant upgrades and expansions in different phases.

In Kerala's port infrastructure, his initiatives aim to boost the state's maritime economy by enhancing port facilities, thereby facilitating increased trade and tourism. His tenure has also seen a renewed focus on the preservation and promotion of Kerala's rich cultural heritage. Under his leadership, museums across the state have received upgrades, and new initiatives have been launched to make these cultural repositories more accessible and engaging to the public.

In his role overseeing archaeology and archives, Kadannappalli Ramachandran has championed efforts to protect and document Kerala's archaeological treasures. His policies have emphasized the importance of historical research and the conservation of ancient sites and arti-

facts, ensuring that Kerala's history is preserved for future generations.

His ability to navigate through complex political landscapes and his unwavering focus on public service have largely overshadowed even the critics.

Kadannappalli Ramachandran's legacy in Kerala politics is marked by his commitment to development, social justice, and cultural preservation. His leadership style, characterized by humility and accessibility, has earned him respect across the political spectrum. Future generations of politicians in Kerala are likely to draw inspiration from his career and contributions.

It's undoubtedly true that his current role as the Minister for Ports, Museums, Archaeology, and Archives exemplifies his multifaceted approach to governance, combining infrastructural development with a deep respect for cultural and historical preservation.





# INTERNATIONAL MUSEUM DAY

## CELEBRATING CULTURAL HERITAGE AND EDUCATION

International Museum Day, celebrated annually on May 18th, is a significant event that brings attention to the vital role museums play in preserving cultural heritage and fostering education. Established by the International Council of Museums (ICOM) in 1977, this day encourages public awareness about the essential contributions of museums to society and promotes cultural exchange, understanding, and collaboration.

### **The Importance of Museums**

Museums are more than mere repositories of artefacts and artworks; they are dynamic institutions dedicated to the preservation, interpretation, and dissemination of cultural, historical, and scientific knowledge. They serve as custodians of humanity's collective memory, safeguarding priceless collections for future generations. By doing so, museums provide communities with a sense of identity and continuity.

One of the primary functions of museums is education. They offer unique learning experiences that complement formal education, providing visitors of all ages with opportunities to engage with history, art, and science in a tangible and interactive

way. Through exhibitions, workshops, lectures, and educational programs, museums foster critical thinking, creativity, and lifelong learning.

Each year, International Museum Day is centred around a specific theme, highlighting different aspects of museum work. Themes such as “Museums as Cultural Hubs: The Future of Tradition” and “Museums for Equality: Diversity and Inclusion” have emphasized the evolving role of museums in addressing contemporary social issues and promoting inclusivity.

On this day, museums worldwide organize special events, including free admission, guided tours, interactive workshops, and special exhibitions. These activities aim to attract a diverse audience and provide unique experiences that encourage public engagement and appreciation for cultural heritage.

In recent years, the digital transformation of museums has become increasingly significant, especially in the wake of the COVID-19 pandemic. Many museums have expanded their online presence, offering virtual tours, digital exhibitions, and interactive online programs. This shift has made cultural resources more accessible to a global audience, breaking down geographical barriers and allowing people to explore museums from the comfort of their homes.



Each year,  
International Museum  
Day is centred around  
a specific theme,  
highlighting different  
aspects of museum  
work.



### **Museums and Community Engagement**

Museums play a crucial role in community engagement by acting as platforms for dialogue and social cohesion. They collaborate with local communities to curate exhibitions that reflect diverse perspectives and address local and global issues. By involving communities in the storytelling process, museums foster a sense of ownership and pride in cultural heritage.

Despite their significance, museums face numerous challenges, including funding constraints, the need for modernization, and the pressure to remain relevant in a rapidly changing world. Addressing these challenges requires innovative approaches, such as embracing technology, enhancing community outreach, and developing sustainable practices.

The future of museums lies in their ability to adapt to changing societal needs while remaining steadfast in their mission to educate, inspire, and connect people. By continuing to evolve and embrace new opportunities, museums can ensure their enduring relevance and impact.

International Museum Day is a celebration of the invaluable contributions that museums make to society. It is a day to recognize and appreciate the efforts of museum professionals and volunteers who work tirelessly to preserve our cultural heritage and educate the public. As we celebrate this day, let us remember the power of museums to enrich our lives, foster understanding, and build bridges between cultures and generations.

# ANNUAL STRATEGY MEET 2024-25

NATIONAL SMALL INDUSTRIES CORPORATION



The National Small Industries Corporation (NSIC), under the Ministry of Micro, Small, and Medium Enterprises (MSME), conducted its Annual Strategy Meet for the fiscal year 2024-25 from May 26th to May 30th, 2024.

The strategic meeting was organized at Club Mahindra, Munnar, a serene setting conducive to thoughtful discussions and strategic planning. The NSIC Branch Office Kerala, located in Ernakulam, was responsible for hosting the event.

The Kerala Branch Office, led by Mr. D. Paul Bright Singh, received the Runner-Up award for the All India

Best Performance Branch for the fiscal year 2023-24. This accolade, issued by Dr. Subhransu Sekhar Acharya, the Chairman and Managing Director of NSIC, recognizes the branch's exceptional performance and commitment to supporting small industries in the region.

The event commenced with an inaugural address by Sri S.C.L. Dhas, Secretary of the MSME, Government of India.

The Annual Strategy Meet brought together key officials of NSIC across the country to deliberate on the strategic direction for the upcoming fiscal year. Attendees engaged in comprehensive discussions on enhancing operational

efficiency, expanding market reach, and fostering innovation within the MSME sector. As an organization dedicated to promoting, aiding, and fostering the growth of micro, small, and medium enterprises in India, NSIC provides a range of support services including credit facilitation, marketing support, and technology solutions. The recognition of the Kerala Branch Office's achievements set a benchmark for excellence, inspiring other branches to strive for similar success.

The collaborative environment and strategic insights shared during the meet are expected to significantly influence the policies and initiatives of NSIC.





# THE DUAL EDGE OF AI EMPOWERING INNOVATION AND ETHICAL CONUNDRUMS



In the contemporary digital landscape, artificial intelligence (AI) has emerged as a transformative force, reshaping industries and revolutionizing everyday life. From enhancing medical diagnostics to optimizing supply chains, AI's potential seems boundless. However, alongside its remarkable benefits, AI harbours a darker side that poses significant ethical challenges and dangers, particularly in the realm of digital media manipulation.

One of the most contentious issues in AI's application is the creation and use of deepfakes. These hyper-realistic manipulated images and videos are generated using sophisticated AI algorithms. While the technology behind deepfakes demonstrates impressive advancements in machine learning and computer vision, it also opens Pandora's box of potential misuse. The malicious use of deepfakes spans from political

disinformation campaigns to personal revenge, raising profound ethical and societal concerns.

The capability to morph photos and videos for deceptive purposes undermines trust in digital media. Imagine a world where any video or image could be convincingly faked. Such a scenario erodes the foundation of trust, not only in media but also in personal interactions. The danger lies not just in the creation of false narratives but in the broader implications for societal trust and the concept of truth itself.

The political arena has already seen the weaponization of deepfakes. In a polarized world, doctored videos can be used to smear opponents, spread misinformation, and manipulate public opinion. These digital forgeries can influence elections, fuel social unrest, and destabilize democracies. The rapid spread of misinformation, often amplified by social media algorithms, can have real-world consequences, including violence and societal division.

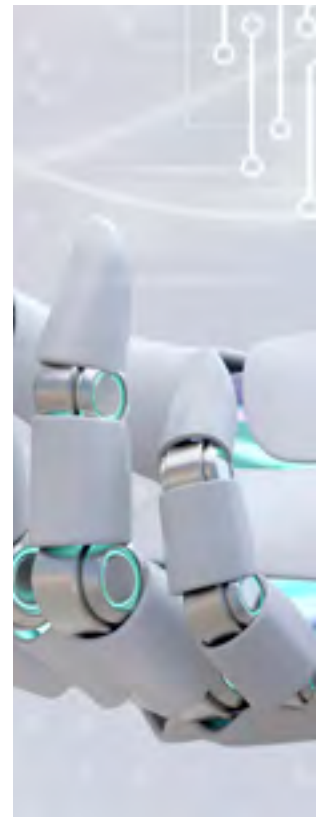


On a personal level, deepfake technology can be used for cyberbullying and harassment. Individuals can find their likeness superimposed onto explicit content or compromising situations, causing immense psychological harm and reputational damage. The non-consensual use of someone's image in this manner is a gross violation of privacy and personal dignity, and the legal frameworks in many jurisdictions are still catching up to address these violations effectively.

Despite these significant risks, it's essential to recognize that AI, when used responsibly, offers unparalleled benefits. The same technologies that create deepfakes can also enhance security and authenticity. For instance, AI can improve biometric verification processes, making systems more secure against fraud. Moreover, AI-driven tools can detect manipulated media, offering a defence mechanism against the very threats they pose.

AI's potential extends far beyond security. In healthcare, AI algorithms analyze vast amounts of data to provide diagnostic insights that surpass human capabilities. Early detection of diseases, personalized treatment plans, and advanced medical research are just a few areas where AI's impact is profoundly positive. Similarly, in environmental conservation, AI is used to monitor ecosystems, track endangered species, and predict natural disasters, helping to protect our planet.

The challenge, therefore, is not to demonize AI but to develop robust ethical guidelines and regulatory frameworks





that ensure its responsible use. Governments, tech companies, and civil society must collaborate to create standards that protect individuals and societies from the malicious use of AI while fostering innovation and positive applications.

Education plays a crucial role in this endeavor. Increasing public awareness about the capabilities and limitations of AI can empower individuals to critically evaluate digital content. Media literacy programs should be integrated into educational curricula to equip people with the skills to discern authentic information from manipulated media. Additionally, these programs can foster a broader understanding of AI's benefits and risks, promoting informed and responsible use of technology.

Furthermore, the tech industry must prioritize the development of AI systems that are transparent and explainable. Building AI with ethical considerations at the forefront can

mitigate risks. Companies should implement stringent policies against the misuse of AI technologies and support initiatives aimed at detecting and countering deepfakes and other forms of digital deception.

Regulatory bodies also have a crucial role to play. Legislation must evolve to address the unique challenges posed by AI. This includes creating laws that protect individuals' rights to their digital likeness, holding creators of malicious deepfakes accountable, and establishing international agreements to manage the global nature of digital misinformation. Regulatory frameworks should also encourage ethical AI development by providing guidelines that balance innovation with societal welfare.

Investment in research and development of AI technologies that prioritize ethical considerations is essential. This includes developing advanced detection systems for deepfakes and other forms of digital manipulation. By staying ahead of malicious actors, society can leverage AI's strengths while minimizing its potential harms. Moreover, fostering a culture of ethical AI development within the tech industry can ensure that new technologies are designed with safeguards against misuse.

Collaboration between stakeholders is vital. Governments, tech companies, academia, and civil society organizations must work together to address the ethical challenges of AI. This collaboration can take the form of public-private partnerships, research consortia, and interdisciplinary forums where experts from various fields discuss and develop comprehensive strategies for AI governance. Such collective efforts can create a balanced approach to AI, ensuring its benefits are maximized while its risks are minimized.

Transparency in AI development and deployment is another key factor. Tech companies should be open about their AI technologies' capabilities and limitations. Clear communication

about how AI is used, particularly in sensitive areas like media and security, can build public trust and prevent misunderstandings. Transparency also involves providing users with tools to verify the authenticity of digital content, empowering them to identify and reject manipulated media.

In addition to technical and regulatory measures, fostering a culture of ethical responsibility in AI development is crucial. This involves instilling a sense of accountability among AI developers and users. Ethical AI development should be a core principle in computer science and engineering education, encouraging future innovators to consider the societal impact of their work. Professional organizations and industry groups can also promote ethical standards and best practices, guiding the responsible development and use of AI technologies.

Ultimately, the ethical use of AI hinges on a shared commitment to uphold human dignity, privacy, and trust. By integrating ethical considerations into every stage of AI development, from research and design to deployment and regulation, society can ensure that AI serves as a force for good. This approach not only addresses the immediate risks posed by technologies like deepfakes but also lays the foundation for a future where AI enhances, rather than undermines, the fabric of society.

In AI's dual capacity as a beneficial and dangerous tool underscores the need for a balanced approach. By fostering a collaborative effort to harness AI responsibly, society can enjoy its myriad benefits while safeguarding against its potential harms. As we navigate the complexities of this digital age, vigilance, ethical integrity, and a commitment to truth are our best allies in ensuring that AI serves the greater good. Through education, regulation, and collaboration, we can steer AI development in a direction that upholds our shared values and promotes a future where technology and humanity coexist harmoniously.





# DEMYSTIFYING CANCER

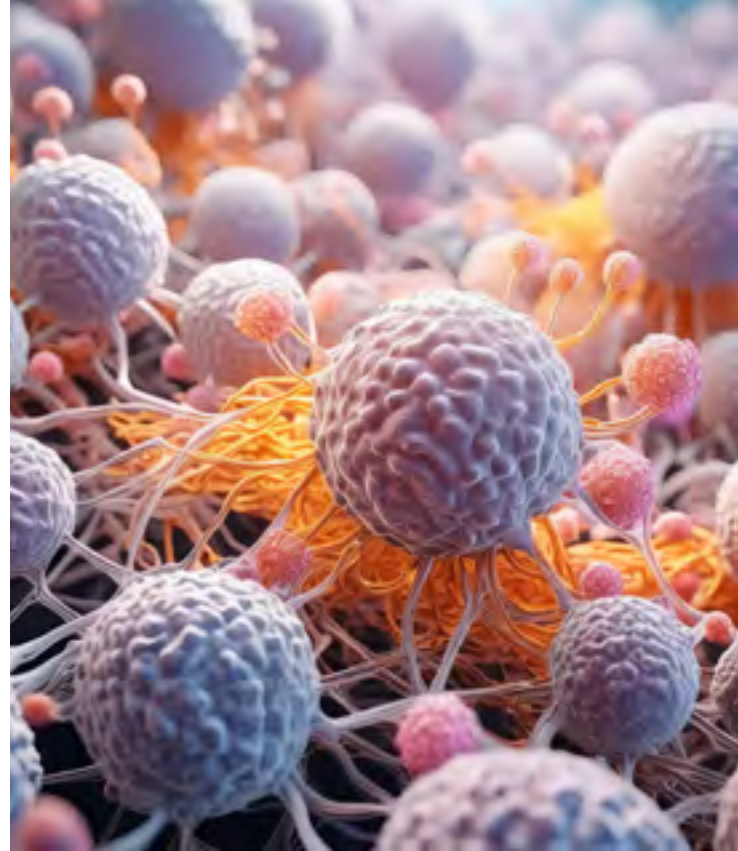
## A JOURNEY TOWARDS CLARITY AND AWARENESS

In the byzantine medley of human understanding, cancer paints a nuanced tableau, adorned with scientific marvels and enduring fallacies. Amidst the crescendo of medical breakthroughs and the kaleidoscope of progress, whispers of myth persist, casting veils over truths and dimming the radiance of clarity. Like elusive murmurs in the breeze, these myths linger, casting shadows upon the path to enlightenment and obstructing the luminescence of knowledge.

In this exploration, we embark on an odyssey through the labyrinth of cancer myths, seeking to unravel truths from the tangled web of misconceptions. As we delve into the tangle of cancer myths, it becomes imperative to separate fact from fiction, shedding light on truths that empower and enlighten. This voyage transcends mere discovery; it is a symphony of revelation, an opulent tapestry woven with threads of insight and embroidered with gems of truth. It is a ballet of illumination, an elegant dance through the halls of misconception, inviting us to pirouette into the dawn of comprehension, where cancer's grip loosens, and the brilliance of human understanding reigns supreme.

### **The Contagious Cancer Conundrum**

Cancer, unlike infectious diseases caused by bacteria or viruses, does not transmit from person to person through casual contact, rendering it non-contagious. Rather, cancer arises from a complex interplay of genetic mutations, environmental factors, and lifestyle choices. While some cancers can be associated with infectious agents, such as certain strains of the human papillomavirus (HPV) or hepatitis B virus, the transmission of cancer itself remains scientifically unfounded. Understanding this fundamental truth is crucial in dispelling fear and stigma surrounding the



disease. By educating ourselves and others, we can foster a supportive environment for individuals facing cancer, free from unwarranted apprehension or discrimination.

### **The Treatment Dilemma**

Cancer myths suggest that the treatment for cancer is often more agonizing than the disease itself. While cancer treatments such as chemotherapy, radiation therapy, and surgery can indeed cause significant side effects and discomfort, it is essential to recognize their crucial role in combating the disease. Modern advancements in oncology have led to the development of more targeted and personalized treatments, aiming to minimize adverse effects while maximizing efficacy. Additionally, supportive care measures, including pain management and psychosocial support, are integral components of cancer treatment, further enhancing the patient's quality of life. While the journey through cancer treatment may be challenging, it is a path paved with hope and resilience, offering the promise of remission and restored health.

### **Men Don't Get Breast Cancer?**

Despite the prevailing misbelief that breast cancer exclusively targets women, the truth is that men can also be affected by this disease. While the occurrence is less common among men, it's crucial to recognize that breast cancer does not discriminate based on gender. Men account for less than 1% of all breast cancer cases, but the lack of awareness often leads to delayed diagnosis and poorer outcomes. Risk factors for male breast cancer include family history, genetic mutations such as BRCA1 and BRCA2, hormonal imbalances, and conditions like Klinefelter syndrome. Early detection through self-examination and awareness of symptoms such as a lump or





swelling in the breast tissue, nipple changes, or discharge is essential for prompt diagnosis and effective treatment. By dispelling the myth that breast cancer only affects women, we can ensure that all individuals receive the attention and care they need for this potentially life-threatening condition.

### **Childhood Cancer Survivors' Academic and Professional Prospects**

There's a common fallacy suggesting that childhood cancer survivors struggle academically and professionally. However, research indicates that while childhood cancer and its treatments may present challenges, many survivors go on to lead successful lives in education and employment. Studies have shown that with appropriate support and accommodations, such as specialized educational programs and vocational rehabilitation services, childhood cancer survivors can thrive in academic settings and pursue fulfilling careers. It's essential to address the unique needs of childhood cancer survivors to ensure they have the necessary resources and opportunities to reach their full potential in both academic and professional endeavours.

### **Cell Phones and Hair Dyes Cause Cancer**

Contrary to popular notions, there is insufficient evidence to support the notion that cell phones or hair dyes directly cause cancer. Extensive research conducted by reputable health organizations, including the World Health Organization (WHO) and the American Cancer Society (ACS), has failed to establish a definitive link between cell phone use and increased cancer risk. Similar-

ly, while some early studies suggested a potential association between certain chemicals found in hair dyes and cancer, subsequent research has not consistently supported this claim. Regulatory agencies such as the U.S. Food and Drug Administration (FDA) have stringent guidelines in place to ensure the safety of hair dye products on the market. It's important to rely on scientific evidence and expert recommendations when evaluating potential cancer risks associated with everyday products and technologies.

### **Genetic Destiny: A Family Legacy of Cancer Guarantees Your Fate**

In juxtaposition to predominant beliefs, although a familial history of cancer may indeed heighten one's susceptibility, it by no means guarantees an inevitable diagnosis. Genetic predisposition merely heightens susceptibility; it doesn't seal one's fate. Numerous factors beyond genetics influence cancer development, including lifestyle choices, environmental exposures, and overall health. Moreover, advancements in genetic testing and personalized medicine enable proactive measures to mitigate inherent risks. Regular screenings, healthy living practices, and medical interventions tailored to individual profiles empower individuals to defy familial shadows and chart their health destinies with resilience and resolve.

### **Once Cured, Cancer Can't Return**

Being declared cancer-free doesn't guarantee immunity from recurrence. While successful treatment may eliminate visible signs of the disease, cancer can re-emerge months or even

years later. Even after rigorous therapies, dormant cancer cells can persist undetected, potentially triggering a relapse. Moreover, certain types of cancer treatments, such as radiation and chemotherapy, can increase the risk of developing secondary cancers in the future. Thus, regular follow-up appointments and diligent monitoring are crucial for detecting any signs of recurrence early on, allowing for timely intervention and improved outcomes. Understanding the ongoing nature of cancer survivorship empowers individuals to remain vigilant in safeguarding their health long after their initial diagnosis and treatment.

### **Microwaving Food in Plastic Containers Causes Cancer**

Against conventional wisdom, microwaving food in plastic containers does not inherently release cancer-causing substances. Most plastics labelled as "microwave-safe" are designed to withstand high temperatures without leaching harmful chemicals. These plastics undergo stringent testing to ensure they meet safety standards set by regulatory agencies. While it's crucial to follow manufacturer instructions and use only microwave-safe containers, the risk of exposure to carcinogenic substances from these plastics during microwaving is minimal. To further minimize potential risks, it's advisable to avoid microwaving plastic containers that are not explicitly labelled as microwave-safe and to use alternative materials such as glass or ceramic when in doubt.

### **Lung Cancer Solely Afflicts Smokers**

Lung cancer doesn't discriminate based on smoking habits. While tobacco use significantly increases the risk, non-smokers can also develop this deadly disease. Studies reveal that up to 20% of lung cancer cases occur in individuals who have never smoked. Factors like exposure to second hand smoke, environmental pollutants like radon and asbestos, genetic predispositions, and pre-existing lung conditions contribute to this alarming statistic. Dispelling this myth is crucial for fostering awareness, encouraging comprehensive preventive measures, and advocating for early detection strategies that save lives across all demographics, irrespective of smoking history.

### **Cancer Treatment Doesn't Signify a Life on Hold**

Regardless of common convictions, undergoing cancer treatment doesn't confine you to the sidelines or stillness. While treatment presents challenges, many individuals persist in their homes, workplaces, and daily activities throughout their cancer journey. With advancements in treatment methods and supportive care, like targeted therapies and symptom management techniques, numerous patients maintain a semblance of normalcy in their routines. Though some may need to temporarily adapt their schedules or work setups, it's entirely feasible to navigate treatment while continuing to engage in activities that bring joy and fulfilment. Recognizing that cancer treatment doesn't necessitate complete





withdrawal empowers patients to embrace life beyond diagnosis and treatment.

### **Organic Foods Can Stop Cancer**

There is a prevalent belief that consuming organic foods can prevent or stop cancer. While organic foods are grown without synthetic pesticides, fertilizers, and genetically modified organisms (GMOs), there is no scientific evidence to support the claim that they can directly prevent or cure cancer. Research shows that a diet rich in a variety of fruits, vegetables, whole grains, and lean proteins is crucial for maintaining overall health and reducing the risk of diseases, including cancer. These benefits are not exclusive to organic foods; conventionally grown produce also provides essential nutrients and antioxidants necessary for a healthy diet. The levels of pesticides found on conventionally grown foods are generally within safety limits established by regulatory agencies like the Environmental Protection Agency (EPA) and the Food and Drug Administration (FDA). Effective cancer prevention involves a comprehensive approach that includes regular screenings, maintaining a healthy weight, avoiding tobacco, limiting alcohol consumption, staying physically active, and protecting skin from excessive sun exposure. While organic foods can be a part of a healthy diet, they should not be viewed as a standalone solution for cancer prevention.

### **Cancer Is a Modern Disease Created by Humans**

The notion that cancer is a modern disease caused solely by contemporary lifestyle and

environmental factors is inaccurate. Evidence of cancer dates back thousands of years, with signs of the disease found in ancient human remains and historical texts. Mummies from ancient Egypt and fossils from early human ancestors show evidence of cancer, indicating that it has been a part of human history long before modern industrialization and technological advancements. While certain modern factors, such as pollution, tobacco use, and changes in diet, can increase cancer risk, the disease itself is not a recent phenomenon created by humans. Understanding the long-standing presence of cancer highlights the importance of focusing on prevention, early detection, and effective treatments to combat this ancient disease.

### **Dispelling Cancer Myths for Informed Understanding**

As we traverse the intricate terrain of cancer knowledge, it becomes imperative to separate fact from fiction. Misconceptions about cancer—spanning its causes, treatment, and prevention—can obscure judgment, foster undue fear, and impede effective care. By dismantling these myths, we pave the way for clearer understanding and improved health outcomes. Knowledge, anchored in scientific evidence, empowers us to make well-informed health decisions, offer robust support to those affected by cancer, and champion ongoing research and advancements. As we advance, let us prioritize truth over fallacy, cultivating a culture of awareness, education, and hope in the collective battle against cancer.

# Explore the Beauty of Backwaters



  
**Grandeur**  
HOUSEBOATS  
AN ISO 9001-2008 COMPANY

**ALLEPPEY | KUMARAKOM | COCHIN | KOLLAM | BEKAL**

VIP Road,  
Opp. to Cochin International Airport  
Golf Club, Nedumbassery  
Kerala, India

+91 85890 79500, +91 85890 66500, +91 99954 49500



# FOOD POISONING CASES IN KERALA

## FOOD SAFETY POLICY AND THE NEED FOR INCREASED GOVERNMENT ATTENTION

In recent years, Kerala, known for its rich landscape of culinary traditions, has now witnessed a worrying increase in food poisoning. While these incidents are alarming, they are not meant to many food businesses or hotels that complement those of the state will be undermined by a vibrant tourist industry. These alarming events have highlighted significant gaps in food safety policies and underscore the urgent need for stronger government oversight. This article examines the increasing incidence of food poisoning in Kerala in detail, highlighting the critical importance of food safety measures and the need for proper government attention to protect public health emphasize.

### **Alarmingly high levels of food poisoning**

Food poisoning, a serious and almost preventable public health issue, has become a major concern in Kerala. Reports of foodborne illnesses have come in with disturbing frequency, affecting not only locals but also tourists who come to Kerala for its delicious cuisine and scenic beauty. These incidents are a variety of factors are linked, including poor diet, inadequate hygiene and the use of contaminated products

Several high-profile articles have highlighted the gravity of this issue. For instance, in the Kozhikode incident in early 2023, several patrons of a popular restaurant fell ill, resulting in several hospitalizations. Subsequent investigations revealed serious deficiencies in food storage and hygiene practices, raising questions about the legal mechanisms for dealing with such issues.

Similarly, a distressing case in Ernakulam involved students from a local school who fell ill after consuming a contaminated midday meal. This incident highlighted the vulnerabilities within the food supply chain and underscored the critical need for stringent monitoring, especially in institutions serving vulnerable populations such as children.

### **Understanding the Importance of Food Safety**

Food safety is a fundamental aspect of public health, encompassing the proper handling, preparation, and storage of food to prevent contamination and foodborne illnesses. Ensuring food safety involves multiple stakeholders, including government agencies, food producers, restaurant operators, and consumers. Each plays a vital role in maintaining the integrity of the food supply chain.

The recent surge in food poisoning cases in Kerala calls for a comprehensive approach to food safety, which includes:

**1. Enhanced Regulatory Oversight:** Government agencies must intensify their efforts to inspect and monitor food establishments. Regular and surprise inspections can act as a deterrent to negligent practices and ensure compliance with hygiene standards. Establishments found in violation should face stringent penalties to reinforce the seriousness of food safety regulations.

**2. Education and Training:** Food handlers, from street vendors to high-end restaurant staff, should receive continuous training on safe food practices. This training should cover essential topics such as proper handwashing techniques, cross-contamination prevention, and the correct methods of storing and preparing food. Educated food handlers are the first line of defence against foodborne illnesses.

**3. Public Awareness Campaigns:** Educating the public about the signs of food poisoning and the importance of reporting suspicious food-related illnesses can help authorities respond more swiftly and effectively. Public awareness campaigns can also inform consumers about the importance of choosing food establishments that prioritize hygiene and safety.

## Government's Role in Ensuring Food Safety

The Kerala government has a pivotal role in safeguarding public health through robust food safety measures. The recent incidents of food poisoning necessitate a multifaceted response from the government, including:

**1. Strengthening Legislation:** Updating and enforcing food safety laws to address current challenges and incorporate best practices is crucial. The Food Safety and Standards Authority of India (FSSAI) regulations should be strictly implemented, and any gaps in the existing laws must be addressed promptly.

**2. Improving Infrastructure:** Investing in better infrastructure for food testing labs to ensure timely and accurate detection of contaminants is essential. Advanced testing facilities can help in identifying potential hazards in the food supply chain before they reach consumers.

**3. Collaboration with Stakeholders:** Working closely with the food industry, including restaurants, hotels, and food delivery services, is vital to foster a culture of safety and accountability. Regular dialogue and collaboration between government agencies and industry stakeholders can lead to the development of effective food safety practices.

**4. Establishing Clear Protocols:** Clear protocols for handling foodborne illness outbreaks must be established and communicated to all stakeholders. Swift and coordinated responses can mitigate the impact of such outbreaks and restore public confidence in the safety of food establishments.

in Kozhikode fell ill after consuming a meal. Investigations revealed that the restaurant had failed to adhere to basic hygiene practices, such as maintaining proper food storage temperatures and ensuring clean preparation areas. This case highlighted the need for regular inspections and strict adherence to food safety regulations.

**Ernakulam School Lunch Contamination:** Another significant incident involved students from a school in Ernakulam who fell ill after consuming a midday meal. The meal, provided as part of a government scheme, was found to be contaminated due to improper storage and handling. This incident underscored the importance of monitoring food safety practices in institutions serving vulnerable populations, such as schools and hospitals.

## Moving Forward: A Call to Action

The recent spate of food poisoning cases in Kerala serves as a stark reminder of the critical need for stringent food safety measures and vigilant government oversight. While it is essential to support and promote the food industry, ensuring public health must remain a top priority. The government, food industry, and consumers all have a role to play in fostering a safe and healthy food environment.

By implementing comprehensive food safety assessments, enhancing regulatory frameworks, and fostering a culture of hygiene and safety, Kerala can protect its residents and visitors. Ensuring the safety of food not only prevents illnesses but also maintains the state's reputation as a destination known for its rich culinary heritage and vibrant food culture.

In conclusion, the rise in food poisoning cases in Kerala is a clarion call for action. It is imperative that the government, food industry, and consumers work together to uphold the highest standards of food safety. Through concerted efforts and unwavering commitment, Kerala can overcome this challenge and continue to be a beacon of culinary excellence and public health safety.



## Case Studies Highlighting the Need for Action

To understand the gravity of the situation, it is instructive to examine specific cases that have brought the issue of food safety to the forefront in Kerala.

**The Kozhikode Restaurant Incident:** In early 2023, several patrons of a well-known restaurant



# MANDAKINI

## A BEAUTIFUL STORY OF LOVE AND LAUGHTER

**A**mong the rich and colourful Malayalam movies released recently, "Mandakini" stands out for its heart-warming tale of love and laughter. Directed by Vinod Leela, it's a story about Aaromal (played by Althaf Salim) and Ambili (played by Anarkali Marikkar), two people who get married and start a new life together.

The movie takes place in a small village, where everyone knows each other. Aaromal is a simple guy who is the son of a woman who runs a driving school, and Ambili used to be her student. They're an unlikely couple, with people gossiping about how Ambili is too good for Aaromal. But despite what others say, they're happy together.



The film begins with the excitement of their wedding day, but it's what happens after the wedding that really makes the story interesting. As the night unfolds, we get to see the ups and downs of their relationship, including a surprise from Ambili's past.



and various film directors, leave a lasting impression.

One of the things that sets "Mandakini" apart is its subtle message about marriage and honesty. While it's mostly a comedy, the movie touches on important themes like trust and communication

in relationships. It shows that even though life may not always be perfect, honesty and love can help overcome any obstacle.

One of the things that makes "Mandakini" special is its nostalgic feel. It reminds people of older movies that were simple yet meaningful. Althaf Salim's character, Aaromal, is like the everyday guy you might meet in your own village, and that's what makes him so relatable. Vinod Leela, the director, has captured this old-fashioned charm while still making the movie feel fresh and modern.

The movie starts a bit slow, with the story taking time to build up. Some people might find this boring, but it's important for setting the scene and getting to know the characters. Once the story gets going, though, it's hard not to get caught up in the drama and excitement.

Althaf Salim and Anarkali Marikkar's performances are the heart of the film. They bring their characters to life with such warmth and sincerity that you can't help but root for them. Ambili's character, in particular, is refreshing because she's not just there to support Aaromal—she has her own story and struggles to overcome.

But it's not just the main characters who shine in "Mandakini." The supporting cast, including Saritha Kukku and Aswathy Sreekanth, add depth and humour to the story. Even the smaller roles, like those played by Vineeth Thattil David

and various film directors, leave a lasting impression.

One of the things that sets "Mandakini" apart is its subtle message about marriage and honesty. While it's mostly a comedy, the movie touches on important themes like trust and communication

#### Tail end

In addition to its heartfelt narrative and endearing characters, "Mandakini" boasts a great deal of visuals and music that further immerse viewers in its enchanting world. The scenic beauty of the village serves as a picturesque backdrop to the unfolding drama, while the soulful melodies composed by Bibin Ashok set the mood and tone of each scene, enhancing the overall cinematic experience.

Furthermore, "Mandakini" offers a refreshing take on gender dynamics, with its female characters portrayed as strong, independent individuals who are not defined solely by their relationships with men. Ambili, in particular, embodies this spirit, showcasing her resilience and agency in the face of adversity. The film's emphasis on female empowerment adds depth and authenticity to its portrayal of relationships, resonating with audiences of all ages.

As the story reaches its climax, "Mandakini" leaves a lasting impression with its poignant exploration of love, marriage, and the human condition. Through its blend of humour, drama, and romance, the film captures the essence of life's joys and struggles, reminding us that true happiness lies in embracing the journey, with all its ups and downs. In the end, "Mandakini" stands as a testament to the enduring power of storytelling to touch hearts and inspire audiences to cherish the moments that truly matter.





# KERALA'S SCHOOL REOPENING

## A BEACON OF HOPE AND ECONOMIC REVIVAL



**A**s the dawn of a new academic year breaks in Kerala, the state witnesses a transformation that transcends the usual monsoon rhythms. The otherwise tranquil and sometimes sombre pre-monsoon period has been invigorated by the return of students to schools. This annual event, typically a routine start to the educational calendar, has this year sparked an extraordinary rejuvenation of local markets and community spirit. The excitement and energy of children returning to their studies have done more than just fill classrooms—they have ignited a vibrant economic resurgence across Kerala.

### **The Pre-Monsoon Doldrums**

Traditionally, the period leading up to the monsoon in Kerala is marked by a noticeable slowdown in economic activity. The pre-monsoon showers, while a harbinger of the much-needed rains, cast a damp spell over the bustling markets. Streets that would typically be alive with the sounds of vendors calling out their wares, the chatter of buyers, and the hum of everyday life became eerily quiet. Market stalls, often teeming with customers, saw fewer footfalls, and sales across various sectors dwindled.

This year, however, the anticipation of the school reopening added a new dimension to this seasonal lull. Shopkeepers and vendors, aware of the impending influx of parents and students, prepared meticulously for the surge. Despite the slow business in the preceding weeks, there was an underlying sense of optimism that the school reopening would bring much-needed economic relief.

### **The Dawn of a New Academic Year**

As the calendar turned to June, the first day of school arrived with much fanfare. The early morning air was filled with a sense of excitement as children donned their new uniforms, their shoes polished to a high shine, and their backpacks neatly packed. The roads, which had been relatively deserted, now bustled with activity as school buses and autorickshaws ferried students to their respective institutions.

The joy and enthusiasm of the children were palpable. For many, it was the thrill of meeting old friends after the long summer break; for others, the anticipation of starting their academic journey in a new class or school. This collective excitement extended beyond the school gates, spilling into the streets and local markets, infusing them with a vibrant energy that had been absent for weeks.

### **A Boon for Local Markets**

The reopening of schools proved to be a catalyst for economic revival, particularly for local markets that cater to the needs of students and their families. Shops selling school supplies experienced a significant surge in business. Shelves stocked with an array of colourful backpacks, lunch boxes adorned with popular cartoon characters, and stacks of pristine notebooks quickly emptied as parents and children eagerly made their purchases.

Stationery stores were abuzz with activity as students selected new pens, pencils, erasers, and rulers. The excitement of choosing the perfect set of supplies was evident in their animated discussions and bright smiles. Uniform shops, too, saw brisk business, with tailors working overtime to ensure that every child had a well-fitted uniform for the new school year.

## Beyond School Supplies

The economic impact of the school reopening extended beyond shops directly associated with education. Food vendors, particularly those selling snacks and tiffin items, experienced a notable increase in sales. Parents, conscious of providing healthy meals for their children, frequented local markets to stock up on fresh fruits, vegetables, and other essentials. The demand for homemade snacks and nutritious tiffin items surged, benefiting small-scale food producers and local farmers.

Transportation services also saw a revival. Autorickshaw drivers, school bus operators, and even local bike taxis reported increased demand as they ferried students to and from school. This uptick in transportation needs created additional employment opportunities, further bolstering the local economy.

## The Ripple Effect on the Community

The reopening of schools did more than just boost economic activity; it also fostered a renewed sense of community. Parents, often accompanied by their children, exchanged smiles and stories as they shopped for school supplies. The shared experience of preparing for the new school year created a bond among families, reinforcing the social fabric of the community.

Teachers, too, played a crucial role in this revitalization. As they welcomed students back to the classroom, their dedication and enthusiasm were evident. Many had prepared special activities and lessons to ease the transition back to school, ensuring that the students felt welcomed and supported. The commitment of educators to their students' well-being and academic success was a testament to the importance of education in Kerala's society.

## A Symbol of Resilience and Hope

The energetic return of students to school symbolized more than just the start of a new academic year; it was a beacon of resilience and hope. The collective enthusiasm of the children, their parents, and the broader community demonstrated the enduring spirit of Kerala. Despite the challenges posed by the pre-monsoon rains and the economic slowdown, the state rallied around the shared goal of ensuring a bright future for its young learners.

This resurgence in local markets and community spirit also highlighted the interconnectedness of education and economic stability. The preparation for the new school year created a ripple effect, benefiting a wide range of sectors and underscoring the vital role that education plays in the broader societal context.


## Looking Forward

As Kerala moves forward, the positive impact of the school reopening serves as a reminder of the power of community and the importance of education. The lively markets, filled with the chatter of excited students and the bustling activity of vendors, paint a hopeful picture for the months ahead. The energy and enthusiasm of the children have not only revived local businesses but have also instilled a renewed sense of optimism and possibility.

The reopening of schools in Kerala has proven to be a significant event, catalysing economic revival and strengthening community bonds. The boundless energy of the young school-goers has breathed new life into local markets, demonstrating the profound and far-reaching impact of education beyond the classroom walls.



**WITH CONFIDENCE,  
WE GO FURTHER**

German   
Technology

When Everything Counts.



Continental Tires celebrates 150 years of Confidence - in our tire expertise,  
German engineering, and uncompromised quality and performance.

With confidence, we go further into the new tomorrow.

**TPS INDIA**, BH Arcade, Geethanjali jn, Kochi | **THE PITSTOP**, Rohini Metro Pillar no.102, Company Padi, Aluva | **THE PITSTOP**, Rohini Adkathbail, Kasargod, | **THE PITSTOP**, Shadh Towers, Pumpwell, Mangalore, karnataka | Contact: **9645090665, 9447090665**, | E-mail: [tpsindiakl@gmail.com](mailto:tpsindiakl@gmail.com)



# YELAGIRI

## A SERENE HILL STATION IN TAMIL NADU



**Y**elagiri, a tranquil hill station located in the Vellore district of Tamil Nadu, offers a peaceful retreat from the hustle and bustle of city life. This hidden gem, situated at an altitude of approximately 1,110 meters above sea level, is surrounded by lush green valleys, verdant orchards, and fragrant rose gardens. Despite its relatively low profile compared to more famous hill stations in India, Yelagiri has its unique charm and allure, making it a perfect destination for those seeking relaxation and natural beauty. This report provides an in-depth look at what makes Yelagiri an exceptional destination, highlighting its attractions, activities, and travel tips.

### **Natural Beauty and Serene Environment**

Yelagiri is renowned for its serene environment and scenic beauty. The hill station is

characterized by its rolling green hills, serene valleys, and vibrant flora. The air is crisp and clean, making it a refreshing escape from the polluted cities. The landscape is dotted with orchards, where fruits like guava, jackfruit, and custard apple are grown. Rose gardens add a splash of color and fragrance to the surroundings, making walks around Yelagiri a delightful experience.

The pleasant climate of Yelagiri, with temperatures ranging from 18°C to 24°C, makes it an ideal year-round destination. The monsoon season, from June to September, brings moderate rainfall, enhancing the greenery and making the environment even more refreshing. The winter months, from November to February, are cool and pleasant, perfect for outdoor activities and exploration.

### **Swamimalai Hill: A Trekker's Delight**

Swamimalai Hill, the highest point in Yelagiri, stands at an elevation of about 4,338 feet. It is one of the main attractions for adventure enthusiasts visiting the hill station. The trek to the top of Swamimalai Hill is moderately challenging and takes around 2 to 3 hours. The trail passes through dense forests and open meadows, offering stunning views of the surrounding landscape.

The summit of Swamimalai Hill provides a panoramic view of the entire Yelagiri region, with its lush green valleys and distant hills. The sense of achievement upon reaching the top, coupled with the breathtaking scenery, makes this trek a memorable experience. It is advisable to start the trek early in the morning to avoid the midday heat and to carry sufficient water and snacks.

### **Punganur Lake and Nature Park**

Punganur Lake is one of the most popular attractions in Yelagiri. This artificial lake, spread over an area of 57 square meters, is surrounded by a well-maintained park, providing a perfect setting for leisurely activities. Visitors can enjoy boating on the lake, with pedal and rowboats available for hire. The calm waters and scenic surroundings make boating a relaxing experience.

Adjacent to the lake is the Nature Park, a beautifully landscaped garden featuring a variety of flora. The park has well-laid-out walking paths, making it ideal for a pleasant stroll. There is also a children's play area, an artificial waterfall, and a musical fountain that operates in the evenings, adding to the park's charm. The Nature Park is a great place for families to spend quality time together amidst nature.

### Jalagamparai Waterfalls

Located about 14 kilometres from Yelagiri, the Jalagamparai Waterfalls are a natural wonder that should not be missed. The waterfalls are formed by the Attaru River, which cascades down from a height, creating a mesmerizing sight. The best time to visit the Jalagamparai Waterfalls is during the monsoon season when the water flow is at its peak.

Reaching the waterfalls involves a trek through the rugged terrain, which adds an element of adventure to the visit. The path to the waterfalls is surrounded by dense forests and rocky outcrops, offering an immersive experience in nature. The sound of the cascading water and the cool mist in the air provide a refreshing break from the heat. Visitors can also enjoy a picnic by the waterfalls, making it a perfect day-trip destination.

### Velavan Temple

The Velavan Temple, dedicated to Lord Murugan, is a significant religious site in Yelagiri. Situated atop a hillock, the temple offers stunning views of the surrounding valleys and hills. The temple is known for its vibrant architecture, with a colourful gopuram (tower) and intricate carvings. The peaceful ambiance of the temple makes it a great place for meditation and spiritual reflection.

The temple complex also includes a statue of Gadothgajan, a character from the Indian epic Mahabharata, which adds to its uniqueness. The annual festival of Thaipusam is celebrated with great fervour at the Velavan Temple, attracting devotees from all over the region. Visitors during this time can witness traditional rituals and cultural





performances, providing a glimpse into the local customs and traditions.

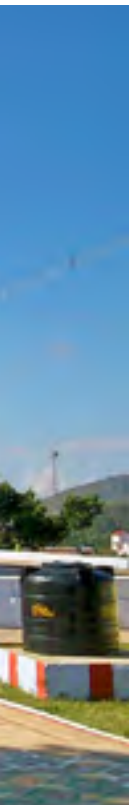
### **Adventure Sports and Outdoor Activities**

Yelagiri offers a range of adventure sports and outdoor activities for thrill-seekers. The hills and valleys provide excellent terrain for activities like paragliding, rock climbing, and mountain biking. Paragliding is particularly popular, with several operators offering tandem flights that provide an exhilarating bird's-eye view of the scenic landscape.

For those who prefer a more laid-back experience, there are several nature trails and walking paths around Yelagiri. These trails are perfect for birdwatching, with a variety of bird species inhabiting the region. The diverse flora and fauna make every walk an opportunity to connect with nature and enjoy its tranquility.

### **Local Culture and Cuisine**

Yelagiri's local culture is a blend of Tamil traditions and rural simplicity.





The local community is warm and welcoming, often eager to share their customs and way of life with visitors. The region is known for its traditional crafts, particularly its exquisite handwoven textiles and intricate wood carvings. Visitors can explore local markets and shops to purchase these unique souvenirs.

The cuisine in Yelagiri is predominantly South Indian, with a focus on fresh, locally sourced ingredients. Traditional dishes like dosa, idli, sambar, and various chutneys are commonly served in local eateries. The use of aromatic spices and herbs gives the food a distinctive flavour. There are also several small restaurants and cafes that offer a mix of local and continental cuisine, catering to diverse tastes.

### **Accommodation and Travel Tips**

Yelagiri offers a range of accommodation options, from budget hotels to luxury resorts. Many of these establishments are situated amidst scenic surroundings, offering beautiful views and a peaceful ambiance. Some popular places to stay include Yelagiri Hills Resort, Sterling Yelagiri, and Hotel Land-

mark. It is advisable to book accommodations in advance, especially during peak tourist seasons.

Reaching Yelagiri is relatively straightforward. The nearest railway station is Jolarpettai, about 21 kilometres away, which is well-connected to major cities like Chennai, Bangalore, and Coimbatore. From Jolarpettai, visitors can hire a taxi or take a bus to Yelagiri. The hill station is also accessible by road, with regular bus services from nearby towns and cities. For those driving, the journey to Yelagiri is a pleasant one, with well-maintained roads and scenic views along the way.

Yelagiri, with its serene environment, scenic beauty, and range of activities, is an ideal destination for a peaceful retreat. Whether you are an adventure enthusiast, a nature lover, or someone looking to relax and unwind, Yelagiri has something to offer. Its unique charm lies in its simplicity and tranquillity, providing a perfect escape from the demands of everyday life. As more travellers discover this hidden gem, Yelagiri is sure to become a popular destination for those seeking a rejuvenating experience amidst nature.

Ồ MÂY ZING  
GOOD  
MOOD  
Em ơi!



NO ADDED COLORS & PRESERVATIVES

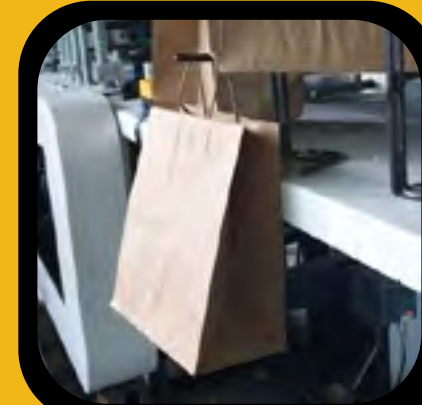
**PRE ORDER NOW**

+91-80-75 56 37 52

iyofood@gmail.com | www.iyoballgrapes.com



# RECYCLE, DURABLE & LOW COST PAPER BAG



— SWITCH —  
FROM PLASTIC TO  
RECYCLABLE  
ECO - FRIENDLY  
KRAFT PAPER  
— BAGS —

IN OUR QUEST SAVE OUR ENVIRONMENT, MULLASSERY IS PROUD TO ANNOUNCE ITS BRAND NEW COLLECTION OF AFFORDABLE, ECO FRIENDLY AND REUSABLE PAPER BAGS.

WITH FULL SCALE OPERATIONS, WE ARE WELL EQUIPPED TO UNDERTAKE BULK ORDERS. ITS TIME FOR EACH OF US TO ABANDON PLASTIC AND SAVE MOTHER EARTH !

“RISE ABOVE PLASTIC, ELEVATE TO PAPER“



MULLASSERY  
PAPER BAGS



+91 9946 000 155



mullasserypaperbags



mullasserypaperbags



www.mullassery.in

HUES OF LIFE

**HOL**  
Hues of Life

**MSME**  
**EXCELLENCE AWARDS**  
**2024**

EDITION - 2

SEMINAR @ ROAD SHOW @ NETWORKING



JUNE 27, 2024 | TRIVANDRUM TENNIS CLUB

**NOMINATION**

Invited : +91 623 84 899 86  
editor@huesoflife.online



Printed & Published by NIJITH RAJ on behalf of FEFE INTELLIGENT BUSINESS SOLUTIONS and Printed at SB PRESS PRIVATE LIMITED., College Road, Statue, Thiruvananthapuram, Kerala-695001 and Published at 24/606, JAYANI, Valiyakunnu, Kizhavalam.PO., Kizhuvalam-Koonathalloor Road, Thiruvananthapuram, Kerala-695104 .

Editor: NIJITH RAJ.

# motoraid PRIVILEGE CLUB

Your Golden Ticket:  
The Key to Business Ascendancy!"



Enquires @

+91 6238891885

motoraid.info@gmail.com

editor@huesoflife.online